

**Cobb County Board of Education  
Board Meeting Agenda  
Thursday, May 19, 2022**

**WORK SESSION – 2:00 p.m.**

- 1. Call to Order & Pledge of Allegiance**
- 2. Public Comment**
- 3. Approval of Minutes**
  - Thursday, April 21, 2022, Board Meeting
  - Thursday, May 12, 2022, Called Board Meeting
- 4. Superintendent’s Report**
  - Quarterly and Monthly Board Financial Status Update
  - Communications Update
- 5. BOARD AGENDA ITEMS**

**AGENDA ITEM #1** – Recommendation for Authorization of School Properties Disposal per District Administrative Rule DO-R

**AGENDA ITEM #2** – Recommendation for Approval of a Permanent Utility Easement with Georgia Power for the New Gymnasium at Sprayberry High School

**AGENDA ITEM #3** – Recommendation to Phase in Building 5040 at Walton High School

**AGENDA ITEM #4** – Recommendation for Approval of Architect Appointment for the Wheeler High School Renovations

**AGENDA ITEM #5** – Recommendation for Adoption of the FY2023 Budget
- 6. Approval of Agenda**
- 7. Recess to Executive Session**

**6:30 p.m. BUDGET PUBLIC FORUM**

- 1. Reconvene from Executive Session**
- 2. Budget Presentation**
- 3. Budget Public Comment**
- 4. Recess until 7:00 p.m.**

## 7:00 p.m. VOTING SESSION

### 1. Reconvene

### 2. Pledge of Allegiance

### 3. Board Recognitions

- 2021-2022 GHSA Class 7A Boys Soccer State Champions – Harrison High School
- 2021-2022 Helen Ruffin Reading Bowl State Champions – Kemp Elementary School
- 2021-2022 Robotics State Champions: Team Zeta (Design Award) – Tritt Elementary School
- 2021-2022 Robotics State Champions: Team Gamma (Driver Skills) – Tritt Elementary School
- 2021-2022 Inspire Award Recipients and CircuitRunners Robotics Team State Champions – Wheeler High School
- 2021-2022 Peachtree District Robotics Team State Champions – Walton High School
- 2021-2022 GHSA Class 6A Girls Tennis Champions – Walton High School
- 2021-2022 GHSA Class 6A Boys Tennis Champions – Walton High School
- 2021-2022 Georgia Science and Engineering Fair: Junior Pinnacle Award – Akshadha Mehta, Dodgen Middle School
- 2021-2022 Georgia Science and Engineering Fair Awards: First Honors – Misha Patel and Samarth Mahapatra, Wheeler High School
- 2021-2022 International Science and Engineering Fair Finalists: Misha Patel, Wheeler High School and Stephen Litt, Kennesaw Mountain High School; Finalist and 4<sup>th</sup> in the World Award – Rohan Kalia, Wheeler High School
- 2021-2022 CCSD Athletic Director of the Year – Scott Kelly, Lassiter High School
- 2021-2022 GHSA Class 6A Girls Soccer Champions – Lassiter High School
- 2021-2022 GHSA Class 6A Boys Soccer Champions – Lassiter High School

### 4. Public Comment

### 5. Items Requiring Action following Executive Session (if any)

- Personnel
- Land
- Legal

### 6. Superintendent's Remarks

### 7. ACTION AGENDA

The following Action Agenda Items will be presented for a vote at the Thursday, May 19, 2022, Board Meeting:

**ACTION AGENDA ITEM #1** – Recommendation for Authorization of School Properties Disposal per District Administrative Rule DO-R

**ACTION AGENDA ITEM #2** – Recommendation for Approval of a Permanent Utility Easement with Georgia Power for the New Gymnasium at Sprayberry High School

**ACTION AGENDA ITEM #3** – Recommendation to Phase in Building 5040 at Walton High School

**ACTION AGENDA ITEM #4** – Recommendation for Approval of Architect Appointment for the Wheeler High School Renovations

**ACTION AGENDA ITEM #5** – Recommendation for Adoption of the FY2023 Budget

**8. Adjourn**

**PENDING BOARD APPROVAL**

**THESE MINUTES ARE NOT OFFICIAL  
UNTIL APPROVED BY THE BOARD OF  
EDUCATION AND SIGNED BY THE  
CHAIRMAN AND EXECUTIVE SECRETARY**

**BOARD MEETING  
THURSDAY, APRIL 21, 2022**

All official meetings of the Cobb County Board of Education conform to state law and are open to the public. The minutes of this meeting are available for public review anytime during the regular office hours or on our website: [www.cobbk12.org](http://www.cobbk12.org)

**BOARD MEETING**

The Cobb County Board of Education convened for a regularly scheduled Board Meeting on Thursday, April 21, 2022, at 2:00 p.m., at 514 Glover Street, with the following members present: Messrs. Banks, Chastain, Hutchins, Scamihorn, Wheeler, Mrs. Davis, Dr. Howard, Mr. Ragsdale, Executive Secretary, and Ms. Gupta and Ms. Wilcox, Interim Board Attorneys.

**CALL TO ORDER**

Mr. Chastain, Board Chair, called the meeting to order at 2:01 p.m.

**PLEDGE OF ALLEGIANCE**

Mr. Chastain, Board Chair, led the group in the Pledge of Allegiance.

**PUBLIC COMMENT**

There were nine (9) public commenters.

**APPROVAL OF MINUTES**

Without objection, the Board approved the minutes of the Thursday, March 24, 2022, Board Meeting.

**SUPERINTENDENT'S REPORT**

- Monthly Board Financial Status Update
  - Chief Financial Officer Bradley Reuben Johnson presented the monthly school district financial status update to the Board.
- Literacy Update
  - Chief School Leadership and Academic Officer Sherri Hill shared a comprehensive update and overview of the various Literacy Programs utilized within the District. Ms. Hill also provided data relating to literacy assessments and outcomes across the District.

**Mr. Chastain called for a 10-minute break at 3:41 p.m. The Board reconvened at 3:51 p.m. Dr. Howard returned to the meeting at 3:56 p.m.**

## **BOARD AGENDA ITEMS**

The Board discussed the Agenda Items listed below. These items will be brought forth for a vote during the Voting Session of the Thursday, April 21, 2022, Board Meeting:

**Without objection, the Board Chair moved Agenda Item #12 to the beginning of the agenda items.**

**AGENDA ITEM #12** – Recommendation for Tentative Approval of the FY2023 Budget

- Without objection, this item was placed on the **Discussion Agenda** for the Voting Session of the Thursday, April 21, 2022, Board Meeting.

**AGENDA ITEM #1** – Recommendation for Authorization of School Properties Disposal per District Administrative Rule DO-R

- Without objection, this item was placed on the **Consent Agenda** for the Voting Session of the Thursday, April 21, 2022, Board Meeting.

**AGENDA ITEM #2** – Recommendation for Approval of a Right-of-Way and a Temporary Construction Easement at Lewis Elementary School

- Without objection, this item was placed on the **Consent Agenda** for the Voting Session of the Thursday, April 21, 2022, Board Meeting.

**AGENDA ITEM #3** – Recommendation to Phase Out the Existing Eastvalley Elementary School

- Without objection, this item was placed on the **Consent Agenda** for the Voting Session of the Thursday, April 21, 2022, Board Meeting.

**AGENDA ITEM #4** – Recommendation for Approval of Architect Appointment for the South Cobb High School Gymnasium Replacement

- Without objection, this item was placed on the **Discussion Agenda** for the Voting Session of the Thursday, April 21, 2022, Board Meeting.

**AGENDA ITEM #5** – Recommendation for Approval of Architect Appointment for Sprayberry High School Upgrades, Renovation and Classroom Replacement Project

- Without objection, this item was placed on the **Discussion Agenda** for the Voting Session of the Thursday, April 21, 2022, Board Meeting.

**AGENDA ITEM #6** – Authorization to Renew a Contract for the Portable Classroom Relocation, Lease, Purchase and Related Services to Ready Portable Classrooms for Students

- Without objection, this item was placed on the **Consent Agenda** for the Voting Session of the Thursday, April 21, 2022, Board Meeting.

**AGENDA ITEM #7** – Authorization to Purchase Ten (10) School Buses

- Without objection, this item was placed on the **Discussion Agenda** for the Voting Session of the Thursday, April 21, 2022, Board Meeting.

**AGENDA ITEM #8** – Recommendation for Approval to Award a Contract for Hillgrove High School Classroom Addition

- Without objection, this item was placed on the **Discussion Agenda** for the Voting Session of the Thursday, April 21, 2022, Board Meeting.

**AGENDA ITEM #9** – Recommendation for Approval to Award a Contract for Lovinggood Middle School Classroom Addition

- Without objection, this item was placed on the **Discussion Agenda** for the Voting Session of the Thursday, April 21, 2022, Board Meeting.

**AGENDA ITEM #10** – Recommendation for Approval to Award a Contract for McEachern High School Plumbing Improvements

- Without objection, this item was placed on the **Discussion Agenda** for the Voting Session of the Thursday, April 21, 2022, Board Meeting.

**AGENDA ITEM #11** – Recommendation for Approval to Award a Contract for Rock Removal at Pebblebrook High School Gymnasium, Theater, and Classroom Addition

- Without objection, this item was placed on the **Discussion Agenda** for the Voting Session of the Thursday, April 21, 2022, Board Meeting.

**APPROVAL OF AGENDA**

Without objection, the Board approved the agenda as amended.

**RECESS TO EXECUTIVE SESSION**

A motion was made by Mr. Banks, seconded by Mr. Wheeler, and unanimously approved by the Board to convene to Executive Session at 5:26 p.m. to discuss land, legal, and personnel matters. Motion carried 7-0.

**BUDGET PUBLIC FORUM**

**RECONVENE FROM EXECUTIVE SESSION**

Without objection, the Board reconvened from Executive Session at 6:30 p.m. for the Budget Public Forum Meeting. All Board Members were present for the meeting with the exception of Dr. Howard

**BUDGET PRESENTATION**

Mr. Brad Johnson, Chief Financial Officer, presented an overview of the FY2023 Budget. Mr. Johnson stated the purpose of the budget public forum was to invite citizens to give input to the Board and comment on the FY23 Budget.

**BUDGET PUBLIC COMMENT**

There were no (0) public commenters.

**RECESS**

Without objection, the Budget Public Forum meeting recessed at 6:33 p.m.

**VOTING SESSION**

The Cobb County Board of Education met for a regularly scheduled Board Meeting on Thursday, April 21, 2022, with the following members present: Messrs. Banks, Chastain, Hutchins, Scamihorn, Wheeler, Mrs. Davis, Dr. Howard, Mr. Ragsdale, Executive Secretary, Ms. Gupta, Interim Board Attorney.

## **RECONVENE**

Without objection, the Board reconvened at 7:01 p.m.

## **PLEDGE OF ALLEGIANCE**

Mr. Chastain, Board Chair, led the group in the Pledge of Allegiance.

## **BOARD RECOGNITIONS**

- 2022 GHSA Class 6A Traditional Wrestling State Champion (138 lbs.) – David Panone, Lassiter High School
- 2022 GHSA Girls All Classification Traditional Wrestling State Tournament Champion (132 lbs.) – May Prado, Lassiter High School
- 2022 GHSA Girls All Classification Traditional Wrestling State Tournament Champion (142 lbs.) – Genevieve An, Kennesaw Mountain High School
- 2022 GHSA Class 6A Traditional Wrestling State Champion (160 lbs.) – Joey Robinson, Pope High School
- 2022 GHSA Class 6A Traditional Wrestling State Champion (170 lbs.) – Zyan Hall, Wheeler High School
- 2022 GHSA Class 7A Traditional Wrestling State Champion (225 lbs.) – Zion Rutledge, Hillgrove High School
- 2022 Female Varsity National Orienteering Champion – Alexis Gabriel, Hillgrove High School
- 2022 Navy JROTC Orienteering National Champions – Hillgrove High School
- 2021-2022 GHSA Class 7A Literary Argumentative Essay State Champion – Lily Hurn, Hillgrove High School
- 2021-2022 GHSA Class 5A-6A Dance High Kick State Champions – Allatoona High School
- 2022 Cobb Library Media Specialist of the Year – Peggy Clay, Acworth Elementary School

## **PUBLIC COMMENT**

- There were fifteen (15) public commenters.

## **ITEMS REQUIRING ACTION FOLLOWING EXECUTIVE SESSION**

### **Personnel Report**

Administration recommended approval of the identified employment actions of the individuals listed on the Personnel Action Report as discussed in Executive Session.

#### **Section I - Principal Level and Higher Position Recommendations**

- Alford, Sandra, Appointment to Principal, Brumby Elementary School, from Assistant Principal, Pitner Elementary School effective July 1, 2022
- Jackson, Lisa, Principal, Palmer Middle School, Retirement effective July 1, 2022
- Meyer, Laura, Principal, Nickajack Elementary School, Retirement effective June 1, 2022
- Richie, Dr. Amanda, Principal, Brumby Elementary School, Retirement effective July 1, 2022

#### **Section II – Position Recommendations Below Principal Level**

##### **Elementary School**

- Ventura, Elaine Shanti, Assistant Principal, Smyrna Elementary School, Retirement effective July 1, 2022

### **Middle School**

- Gary-Robinson, Dreina, Assistant Principal, East Cobb Middle School, Retirement effective June 1, 2022

### **High School**

- Wilson, Dr. Zachary, Assistant Principal, McEachern High School, Resignation effective June 14, 2022
  - A motion was made by Mr. Banks, seconded by Dr. Howard, and unanimously approved by the Board to approve the Personnel Action Report as presented in Executive Session. Motion carried 7-0.

### **LAND MATTER**

A motion was made by Mr. Wheeler, seconded by Dr. Howard, and unanimously approved by the Board to approve the following real estate contract and authorize the purchase of the property, subject to satisfactory due diligence:

- Purchase of real property and improvements on approximately 1.81 acres, including a 4,021 square foot building, at 835 Corner Road, Powder Springs, GA (Tax Parcel Numbers 19015800050 and 19013900120) for \$370,000.00 plus ancillary costs including inspection fees, closing costs, etc.
  - Motion carried 7-0.

### **SUPERINTENDENT'S REMARKS**

The Superintendent commented on various items occurring throughout the Cobb County School District.

### **ACTION AGENDA:**

#### **CONSENT AGENDA**

**ACTION AGENDA ITEM #1** – Recommendation for Authorization of School Properties Disposal per District Administrative Rule DO-R

**ACTION AGENDA ITEM #2** – Recommendation for Approval of a Right-of-Way and a Temporary Construction Easement at Lewis Elementary School

**ACTION AGENDA ITEM #3** – Recommendation to Phase Out the Existing Eastvalley Elementary School

**ACTION AGENDA ITEM #6** – Authorization to Renew a Contract with Mobile Modular Management in the amount of \$1,500,000.00 for the Portable Classroom Relocation, Lease, Purchase and Related Services to Ready Portable Classrooms for Students

- Without objection, the Board approved the **Consent Agenda Items** as presented.

### **ACTION AGENDA:**

#### **DISCUSSION AGENDA:**

**ACTION AGENDA ITEM #4** – Recommendation for Approval of Architect Appointment for the South Cobb High School Gymnasium Replacement

- A motion was made by Mr. Hutchins, seconded by Mr. Wheeler, and unanimously approved by the Board. Motion carried 7-0.



**ACTION AGENDA ITEM #5** – Recommendation for Approval of Architect Appointment for Sprayberry High School Upgrades, Renovation and Classroom Replacement Project

- A motion was made by Mr. Chastain, seconded by Mrs. Davis, and unanimously approved by the Board. Motion carried 7-0.

**ACTION AGENDA ITEM #7** – Authorization to Purchase Ten (10) School Buses

- A motion was made by Dr. Howard, seconded by Mr. Hutchins, and unanimously approved by the Board to purchase ten buses from Rush Truck Centers of Georgia, Inc. in the amount of \$1,217,950.00. Motion carried 7-0.

**ACTION AGENDA ITEM #8** – Recommendation for Approval to Award a Contract for Hillgrove High School Classroom Addition

- A motion was made by Mr. Wheeler, seconded by Mrs. Davis, and unanimously approved by the Board to award a contract to Manhattan Construction Company, Atlanta, GA, in the amount of \$6,845,000.00 for the Hillgrove High School Classroom Addition Project. Motion carried 7-0.

**ACTION AGENDA ITEM #9** – Recommendation for Approval to Award a Contract for Lovinggood Middle School Classroom Addition

- A motion was made by Mr. Wheeler, seconded by Mrs. Davis, and unanimously approved by the Board to award a contract to Triad Construction Company, Atlanta, GA, in the amount of \$5,040,000.00 for the Lovinggood Middle School Classroom Addition Project. Motion carried 7-0.

**ACTION AGENDA ITEM #10** – Recommendation for Approval to Award a Contract for McEachern High School Plumbing Improvements

- A motion was made by Mr. Wheeler, seconded by Mr. Hutchins, and unanimously approved by the Board to award a contract to Swofford Construction Inc., Kennesaw, GA, in the amount of \$1,624,000.00 for McEachern High School Plumbing Improvements. Motion carried 7-0.

**ACTION AGENDA ITEM #11** – Recommendation for Approval to Award a Contract for Rock Removal at Pebblebrook High School Gymnasium, Theater, and Classroom Addition

- A motion was made by Mr. Hutchins, seconded by Mr. Wheeler, and unanimously approved by the Board to award a contract to Bowen & Watson, Inc., in the amount of \$334,522.00 for Rock Removal at the Pebblebrook High School Gymnasium, Theater, and Classroom Addition Project. Motion carried 7-0.

**ACTION AGENDA ITEM #12** – Recommendation for Tentative Approval of the FY2023 Budget

- A motion was made by Mr. Banks, seconded by Mr. Wheeler, and unanimously approved by the Board to tentatively approve the FY2023 Budget. Motion carried 7-0.

**ADJOURN**

Without objection, the Board adjourned at 8:40 p.m.

---

**CHAIRMAN**

---

**EXECUTIVE SECRETARY**

**PENDING BOARD APPROVAL**

**THESE MINUTES ARE UNOFFICIAL UNTIL  
APPROVED BY THE BOARD AND SIGNED BY  
THE CHAIRMAN AND EXECUTIVE SECRETARY**

**CALLED BOARD MEETING  
COBB COUNTY, GEORGIA  
THURSDAY, MAY 12, 2022**

The Cobb County Board of Education met in a Called Board Meeting at 10:30 a.m. on Thursday, May 12, 2022, at 514 Glover Street, with the following members present: Messrs. Banks, Scamihorn, Wheeler, Dr. Howard, Mr. Ragsdale, Executive Secretary, Mrs. Wilcox and Mrs. Gupta, Interim Board Attorneys. Mrs. Davis, Mr. Chastain, and Mr. Hutchins were not present for the meeting.

All official meetings of the Cobb County Board of Education conform to state law and are open to the public. The minutes of this meeting are available for public review anytime during the regular office hours or on our website at [www.cobbk12.org](http://www.cobbk12.org)

**CALL TO ORDER**

Mr. Banks, Board Vice Chair, called the meeting to order at 10:32 a.m.

**EXECUTIVE SESSION**

A motion was made by Mr. Scamihorn, seconded by Dr. Howard, and approved by the Board to convene to Executive Session at 10:32 a.m. for a student matter. Motion carried 4-0. Mrs. Davis, Mr. Chastain, and Mr. Hutchins were not present for the vote.

**RECONVENE FROM EXECUTIVE SESSION**

Without objection, the Board reconvened from Executive Session at 11:05 a.m.

**STUDENT DISCIPLINE APPEAL – V.P. (student) - Kell High School**

A motion was made by Mr. Scamihorn, seconded by Mr. Wheeler, and approved by the Board to uphold the determination of the student disciplinary tribunal as discussed in Executive Session. Motion carried 4-0. Mrs. Davis, Mr. Chastain, and Mr. Hutchins were not present for the vote.

**ADJOURN**

Without objection, the meeting adjourned at 11:06 a.m.

---

**CHAIRMAN**

---

**EXECUTIVE SECRETARY**

**COBB COUNTY BOARD OF EDUCATION**  
**AGENDA ITEM**  
**May 19, 2022**

**TOPIC:**

**AGENDA ITEM #1** – Recommendation for Approval of School Properties Disposal per District Administrative Rule DO-R

**BACKGROUND/RATIONALE:**

Through normal operations, the district generates surplus property and equipment due to damage and obsolescence on a regular basis. Items that are no longer needed by a school or department but are still in good condition and re-usable are made available to other schools and departments at no charge. Items that are no longer usable in the District are declared surplus. **State Law requires School Board approval for District Property to be designated as surplus under §20-2-520 of the Georgia Code of Laws.** The need to dispose of these items in an efficient, cost effective and expeditious manner is imperative to the district. Items are currently stored in the District warehouse that have been deemed surplus. A complete list of current surplus items is on file in the Superintendent's office or on the District's website under Meeting Agenda Items. All items listed are no longer of use by the District.

Methods available to dispose of surplus items include:

Public auction

Sealed bid or private sale

The State of Georgia Department of Administrative Services on-line and public auction services

Sale to other public-school districts at costs equal to previous auction results

Online auctions

Negotiated contracts

Upon Board approval of the attached lists, the Business Services Division will dispose of this surplus in a manner that is the most cost effective and efficient for the district as outlined in Administrative Rule DO-R. Acceptable methods of disposal will be continually reviewed to maximize our return on investment.

**SUPERINTENDENT'S RECOMMENDATION:**

Approve the recommendation for authorization of School Properties Disposal as detailed in the lists on file in the Superintendent's office.

**COST:**

The District will receive revenue for the disposal of these items. The revenues received will assist in deferring labor costs for management of the disposal process

Account Charge code: N/A

Budgeted: N/A

**DATA SOURCES:**

Marc Smith

Jill Vestal

Stephen Cochran

**April 2022 Inventoried Surplus  
Picked Up and Verified 03/23/2022 thru 04/26/2022**

**TOTAL ASSETS**

**TECHNOLOGY**

<b>QTY</b>	<b>CLASS/DESCRIPTION</b>	<b>PROPERTY TAG</b>	<b>SERIAL NUMBER</b>	<b>PURCHASE DATE</b>
1	PROJECTOR- VIDEO	1674790	G1E006767	9/1/2001
1	PROJECTOR- VIDEO	1873048	6501099EG	12/19/2006
1	PROJECTOR- VIDEO	1873142	6501490EG	12/19/2006
1	PROJECTOR- VIDEO	1870185	GYSF671248L	1/29/2007
1	PROJECTOR- VIDEO	1870186	GYSF6Z1262L	1/29/2007
1	PROJECTOR- VIDEO	1870187	GYSF6Z1074L	1/29/2007
1	PROJECTOR- VIDEO	1870188	GYSF6Z1069L	1/29/2007
1	STUDENT RESPONSE SYSTEM	1840754		6/5/2007
1	COMPUTER- DESKTOP	1829832	DKZ4YC1	6/27/2007
1	PROJECTOR- VIDEO	1887706	8010148	4/23/2010
1	COMPUTER- DESKTOP	1891276	GLK2JN1	8/10/2010
1	COMPUTER- DESKTOP	1891277	1NK2JN1	8/10/2010
1	COMPUTER- DESKTOP	1891391	8GG2JN1	8/10/2010
1	COMPUTER-TEACHER LAPTOP	1N50LQ1	1N50LQ1	6/13/2011
1	COMPUTER-TEACHER LAPTOP	2Q92LQ1	2Q92LQ1	6/20/2011
1	COMPUTER-TEACHER LAPTOP	2ZP1LQ1	2ZP1LQ1	6/22/2011
1	COMPUTER- TABLET	1898843	DQVFW1MADFHW	6/27/2011
1	COMPUTER- TABLET	1898846	DQVFW15PDFHW	6/27/2011
1	COMPUTER- TABLET	1898847	DQVFW26ZDFHW	6/27/2011
1	COMPUTER- TABLET	1898848	DQVFW17EDFHW	6/27/2011
1	COMPUTER- TABLET	1898849	DQVFW1RVDFHW	6/27/2011
1	COMPUTER- TABLET	1898851	DQVFW1QRDFHW	6/27/2011
1	COMPUTER- TABLET	1898853	DQVFW0PVDFHW	6/27/2011
1	COMPUTER - LAPTOP	1903484		6/29/2011
1	COMPUTER-TEACHER LAPTOP	1JLLKQ1	1JLLKQ1	6/30/2011
1	COMPUTER- TABLET	1900759	DLXF99KGFHW	7/8/2011
1	COMPUTER- TABLET	1900761	DLXF8EWJDFHW	7/8/2011
1	COMPUTER- TABLET	1900762	DLXF9VJWDFHW	7/8/2011
1	COMPUTER- TABLET	1900763	DQTF91B2DFHW	7/8/2011
1	COMPUTER- TABLET	1900770	DLXF8A48DFHW	7/8/2011
1	COMPUTER- TABLET	1900772	DLXF9T7RDFHW	7/8/2011
1	COMPUTER- TABLET	1900773	DLXF7JLLDFHW	7/8/2011
1	COMPUTER-TEACHER LAPTOP	1J9WKQ1	1J9WKQ1	7/18/2011
1	COMPUTER-TEACHER LAPTOP	4B00LQ1	4B00LQ1	8/4/2011
1	COMPUTER - LAPTOP	10W90Q1	10W90Q1	8/12/2011
1	COMPUTER - LAPTOP	17X90Q1	17X90Q1	8/12/2011
1	COMPUTER - LAPTOP	18Y90Q1	18Y90Q1	8/12/2011
1	COMPUTER - LAPTOP	1FX90Q1	1FX90Q1	8/12/2011
1	COMPUTER - LAPTOP	1MT90Q1	1MT90Q1	8/12/2011
1	COMPUTER - LAPTOP	20W90Q1	20W90Q1	8/12/2011
1	COMPUTER - LAPTOP	28X90Q1	28X90Q1	8/12/2011
1	COMPUTER - LAPTOP	2FX90Q1	2FX90Q1	8/12/2011
1	COMPUTER - LAPTOP	2ZS90Q1	2ZS90Q1	8/12/2011
1	COMPUTER - LAPTOP	31W90Q1	31W90Q1	8/12/2011
1	COMPUTER - LAPTOP	35W90Q1	35W90Q1	8/12/2011
1	COMPUTER - LAPTOP	3TV90Q1	3TV90Q1	8/12/2011

**April 2022 Inventoried Surplus**  
**Picked Up and Verified 03/23/2022 thru 04/26/2022**

**TOTAL ASSETS**

1	COMPUTER - LAPTOP	3VX90Q1	3VX90Q1	8/12/2011
1	COMPUTER - LAPTOP	40W90Q1	40W90Q1	8/12/2011
1	COMPUTER - LAPTOP	41T90Q1	41T90Q1	8/12/2011
1	COMPUTER - LAPTOP	42Y90Q1	42Y90Q1	8/12/2011
1	COMPUTER - LAPTOP	48X90Q1	48X90Q1	8/12/2011
1	COMPUTER - LAPTOP	4NV90Q1	4NV90Q1	8/12/2011
1	COMPUTER - LAPTOP	50Y90Q1	50Y90Q1	8/12/2011
1	COMPUTER - LAPTOP	51Y90Q1	51Y90Q1	8/12/2011
1	COMPUTER - LAPTOP	52Y90Q1	52Y90Q1	8/12/2011
1	COMPUTER - LAPTOP	55W90Q1	55W90Q1	8/12/2011
1	COMPUTER - LAPTOP	57X90Q1	57X90Q1	8/12/2011
1	COMPUTER - LAPTOP	5DV90Q1	5DV90Q1	8/12/2011
1	COMPUTER - LAPTOP	60W90Q1	60W90Q1	8/12/2011
1	COMPUTER - LAPTOP	61Y90Q1	61Y90Q1	8/12/2011
1	COMPUTER - LAPTOP	67X90Q1	67X90Q1	8/12/2011
1	COMPUTER - LAPTOP	6DX90Q1	6DX90Q1	8/12/2011
1	COMPUTER - LAPTOP	6LW90Q1	6LW90Q1	8/12/2011
1	COMPUTER - LAPTOP	6TX90Q1	6TX90Q1	8/12/2011
1	COMPUTER - LAPTOP	71W90Q1	71W90Q1	8/12/2011
1	COMPUTER - LAPTOP	78X90Q1	78X90Q1	8/12/2011
1	COMPUTER - LAPTOP	7FX90Q1	7FX90Q1	8/12/2011
1	COMPUTER - LAPTOP	7MV90Q1	7MV90Q1	8/12/2011
1	COMPUTER - LAPTOP	7TX90Q1	7TX90Q1	8/12/2011
1	COMPUTER - LAPTOP	7VV90Q1	7VV90Q1	8/12/2011
1	COMPUTER - LAPTOP	7ZV90Q1	7ZV90Q1	8/12/2011
1	COMPUTER - LAPTOP	80W90Q1	80W90Q1	8/12/2011
1	COMPUTER - LAPTOP	81T90Q1	81T90Q1	8/12/2011
1	COMPUTER - LAPTOP	81W90Q1	81W90Q1	8/12/2011
1	COMPUTER - LAPTOP	81Y90Q1	81Y90Q1	8/12/2011
1	COMPUTER - LAPTOP	88X90Q1	88X90Q1	8/12/2011
1	COMPUTER - LAPTOP	8DX90Q1	8DX90Q1	8/12/2011
1	COMPUTER - LAPTOP	8SV90Q1	8SV90Q1	8/12/2011
1	COMPUTER - LAPTOP	8ZS90Q1	8ZS90Q1	8/12/2011
1	COMPUTER - LAPTOP	97X90Q1	97X90Q1	8/12/2011
1	COMPUTER - LAPTOP	9DX90Q1	9DX90Q1	8/12/2011
1	COMPUTER - LAPTOP	9RT90Q1	9RT90Q1	8/12/2011
1	COMPUTER - LAPTOP	BMV90Q1	BMV90Q1	8/12/2011
1	COMPUTER - LAPTOP	BVX90Q1	BVX90Q1	8/12/2011
1	COMPUTER - LAPTOP	BYS90Q1	BYS90Q1	8/12/2011
1	COMPUTER - LAPTOP	C0Y90Q1	C0Y90Q1	8/12/2011
1	COMPUTER - LAPTOP	C1Y90Q1	C1Y90Q1	8/12/2011
1	COMPUTER - LAPTOP	C5W90Q1	C5W90Q1	8/12/2011
1	COMPUTER - LAPTOP	C7V90Q1	C7V90Q1	8/12/2011
1	COMPUTER - LAPTOP	CCX90Q1	CCX90Q1	8/12/2011
1	COMPUTER - LAPTOP	CMV90Q1	CMV90Q1	8/12/2011
1	COMPUTER - LAPTOP	D1V90Q1	D1V90Q1	8/12/2011
1	COMPUTER - LAPTOP	DDX90Q1	DDX90Q1	8/12/2011
1	COMPUTER - LAPTOP	F1W90Q1	F1W90Q1	8/12/2011

**April 2022 Inventoried Surplus**  
**Picked Up and Verified 03/23/2022 thru 04/26/2022**

**TOTAL ASSETS**

1	COMPUTER - LAPTOP	F1X90Q1	F1X90Q1	8/12/2011
1	COMPUTER - LAPTOP	F1Y90Q1	F1Y90Q1	8/12/2011
1	COMPUTER - LAPTOP	FFX90Q1	FFX90Q1	8/12/2011
1	COMPUTER - LAPTOP	FMV90Q1	FMV90Q1	8/12/2011
1	COMPUTER - LAPTOP	G0Y90Q1	G0Y90Q1	8/12/2011
1	COMPUTER - LAPTOP	G1Y90Q1	G1Y90Q1	8/12/2011
1	COMPUTER - LAPTOP	G5Y90Q1	G5Y90Q1	8/12/2011
1	COMPUTER - LAPTOP	G6X90Q1	G6X90Q1	8/12/2011
1	COMPUTER - LAPTOP	G7X90Q1	G7X90Q1	8/12/2011
1	COMPUTER - LAPTOP	GDX90Q1	GDX90Q1	8/12/2011
1	COMPUTER - LAPTOP	GMV90Q1	GMV90Q1	8/12/2011
1	COMPUTER - LAPTOP	GSX90Q1	GSX90Q1	8/12/2011
1	COMPUTER - LAPTOP	H1W90Q1	H1W90Q1	8/12/2011
1	COMPUTER - LAPTOP	H5T90Q1	H5T90Q1	8/12/2011
1	COMPUTER - LAPTOP	H5Y90Q1	H5Y90Q1	8/12/2011
1	COMPUTER - LAPTOP	H6X90Q1	H6X90Q1	8/12/2011
1	COMPUTER - LAPTOP	HDX90Q1	HDX90Q1	8/12/2011
1	COMPUTER - LAPTOP	HZX90Q1	HZX90Q1	8/12/2011
1	COMPUTER - LAPTOP	J0W90Q1	J0W90Q1	8/12/2011
1	COMPUTER - LAPTOP	J1L50Q1	J1L50Q1	8/12/2011
1	COMPUTER - LAPTOP	J1Y90Q1	J1Y90Q1	8/12/2011
1	COMPUTER - LAPTOP	J4T90Q1	J4T90Q1	8/12/2011
1	COMPUTER - LAPTOP	J6X90Q1	J6X90Q1	8/12/2011
1	COMPUTER - LAPTOP	JKT90Q1	JKT90Q1	8/12/2011
1	COMPUTER - LAPTOP	JNX90Q1	JNX90Q1	8/12/2011
1	COMPUTER - LAPTOP	JS170Q1	JS170Q1	8/12/2011
1	COMPUTER - LAPTOP	JZW90Q1	JZW90Q1	8/12/2011
1	COMPUTER - LAPTOP	JZX90Q1	JZX90Q1	8/12/2011
1	COMPUTER- DESKTOP	1900503	8Q1RYQ1	8/15/2011
1	COMPUTER-TEACHER LAPTOP	BBZVKQ1	BBZVKQ1	8/16/2011
1	COMPUTER-TEACHER LAPTOP	BC0QKQ1	BC0QKQ1	8/16/2011
1	COMPUTER- DESKTOP	1899189	F319ZQ1	9/7/2011
1	COMPUTER- TABLET	1907119	DN6GGJ54DFJ0	11/3/2011
1	COMPUTER- TABLET	1907120	DN6GG44BDFJ0	11/3/2011
1	COMPUTER- TABLET	1901269	DN6GL44XDFHY	11/9/2011
1	COMPUTER- TABLET	1904968	DLXGK43XDFHY	11/16/2011
1	COMPUTER- TABLET	1903444	DMRGRA51DFHW	12/6/2011
1	COMPUTER- TABLET	1903445	DMRGR9ARDFHW	12/6/2011
1	COMPUTER- TABLET	1903446	DMRGR9RDDFW	12/6/2011
1	COMPUTER- TABLET	1903447	DMRGR87XDFHW	12/6/2011
1	COMPUTER- TABLET	1903448	DMQGRRH2DFHW	12/6/2011
1	COMPUTER- TABLET	1903449	DMQGRR9DFHW	12/6/2011
1	COMPUTER- TABLET	1903450	DMRGRAX6DFHW	12/6/2011
1	COMPUTER- TABLET	1903451	DMQGRRTPDFHW	12/6/2011
1	COMPUTER- TABLET	1903452	DMRGR8VQDFHW	12/6/2011
1	COMPUTER- TABLET	1903453	DMRGR870DFHW	12/6/2011
1	COMPUTER- TABLET	1903474	DMQGRPR6DFHW	12/6/2011
1	COMPUTER- TABLET	1903476	DMQGRUWQDFHW	12/6/2011

**April 2022 Inventoried Surplus**  
**Picked Up and Verified 03/23/2022 thru 04/26/2022**

**TOTAL ASSETS**

1	COMPUTER- TABLET	1903477	DMQGRSYRDFHW	12/6/2011
1	COMPUTER- TABLET	1903478	DMQGRPMDDFW	12/6/2011
1	COMPUTER- TABLET	1903480	DMQGRQJ0DFHW	12/6/2011
1	COMPUTER- TABLET	1903482	DMQGRURXDFHW	12/6/2011
1	COMPUTER- TABLET	1903483	DMQGRTK4DFHW	12/6/2011
1	COMPUTER- DESKTOP	1SFYTR1	1SFYTR1	12/22/2011
1	COMPUTER- DESKTOP	1SFZTR1	1SFZTR1	12/22/2011
1	COMPUTER- DESKTOP	1SGVTR1	1SGVTR1	12/22/2011
1	COMPUTER- DESKTOP	1SGYTR1	1SGYTR1	12/22/2011
1	COMPUTER- DESKTOP	1SHVTR1	1SHVTR1	12/22/2011
1	COMPUTER- DESKTOP	1SHWTR1	1SHWTR1	12/22/2011
1	COMPUTER- DESKTOP	1SJTTR1	1SJTTR1	12/22/2011
1	COMPUTER- DESKTOP	1SJWTR1	1SJWTR1	12/22/2011
1	COMPUTER- DESKTOP	8GLJ1R1	8GLJ1R1	1/17/2012
1	COMPUTER-TEACHER LAPTOP	1899324	C1MGVP18DV13	1/17/2012
1	COMPUTER- DESKTOP	G85G1R1	G85G1R1	1/25/2012
1	COMPUTER- DESKTOP	CRFF1R1	CRFF1R1	1/27/2012
1	COMPUTER- DESKTOP	23N7WR1	23N7WR1	1/31/2012
1	COMPUTER- DESKTOP	5TQKHS1	5TQKHS1	1/31/2012
1	COMPUTER- TABLET	1903465	DMQH5ESTDFHW	2/14/2012
1	COMPUTER- TABLET	1903467	DN6H6M0UDFW	2/14/2012
1	COMPUTER- TABLET	1903468	DN6H6MNCDFHW	2/14/2012
1	COMPUTER- TABLET	1903469	DN6H6DDTDFHW	2/14/2012
1	COMPUTER- TABLET	1903470	DN6H6JX4DFHW	2/14/2012
1	COMPUTER- TABLET	1903471	DN6H6LYVDFHW	2/14/2012
1	COMPUTER- TABLET	1903473	DN6H6KU1DFHW	2/14/2012
1	COMPUTER- TABLET	1903414	DN6H8JDCDFHW	2/24/2012
1	COMPUTER- TABLET	1903415	DN6H8800DFHW	2/24/2012
1	COMPUTER- TABLET	1903416	DN6H87ZKDFHW	2/24/2012
1	COMPUTER- TABLET	1903418	DN6H8DQ6DFHW	2/24/2012
1	COMPUTER- TABLET	1903420	DN6H8Q52DFHW	2/24/2012
1	COMPUTER- TABLET	1903421	DN6H88AMDFHW	2/24/2012
1	COMPUTER- TABLET	1903422	DN6H8JK8DFHW	2/24/2012
1	COMPUTER- TABLET	1903423	DN6H8E9CDFHW	2/24/2012
1	COMPUTER- TABLET	1903424	DN6H87QNDFHW	2/24/2012
1	COMPUTER- TABLET	1903425	DN6H87JXDFHW	2/24/2012
1	COMPUTER- TABLET	1903426	DN6H886CDFHW	2/24/2012
1	COMPUTER- TABLET	1903427	DN6H86BZDFHW	2/24/2012
1	COMPUTER- TABLET	1903428	DN6H88B6DFHW	2/24/2012
1	COMPUTER- TABLET	1903429	DN6H86A5DFHW	2/24/2012
1	COMPUTER- TABLET	1903430	DN6H86N4DFHW	2/24/2012
1	COMPUTER- TABLET	1903431	DN6H8687DFHW	2/24/2012
1	COMPUTER- TABLET	1903432	DN6H86J7DFHW	2/24/2012
1	COMPUTER- TABLET	1903433	DN6H86E7DFHW	2/24/2012
1	COMPUTER- TABLET	1903434	DN6H8821DFHW	2/24/2012
1	COMPUTER- TABLET	1903435	DN6H8K89DFHW	2/24/2012
1	COMPUTER- TABLET	1903436	DN6H8K7TDFHW	2/24/2012
1	COMPUTER- TABLET	1903437	DN6H862VDFHW	2/24/2012

**April 2022 Inventoried Surplus**  
**Picked Up and Verified 03/23/2022 thru 04/26/2022**

**TOTAL ASSETS**

1	COMPUTER- TABLET	1903438	DN6H886NDFHW	2/24/2012
1	COMPUTER- TABLET	1903439	DN6H8JJXDFHW	2/24/2012
1	COMPUTER- TABLET	1903440	DN6H8JGDDFW	2/24/2012
1	COMPUTER- TABLET	1903441	DN6H8Q50DFHW	2/24/2012
1	COMPUTER- TABLET	1903442	DN6H8PXSDFW	2/24/2012
1	COMPUTER- TABLET	1903443	DN6H863BDFHW	2/24/2012
1	COMPUTER- TABLET	1903454	DN6H8848DFHW	2/24/2012
1	COMPUTER- TABLET	1903455	DN6H888ZDFHW	2/24/2012
1	COMPUTER- TABLET	1903456	DN6H868TDFHW	2/24/2012
1	COMPUTER- TABLET	1903458	DN6H86CEDFW	2/24/2012
1	COMPUTER- DESKTOP	1960885	GF8RJS1	4/24/2012
1	COMPUTER- TABLET	1910040	DMPHM1RUDJ8V	5/16/2012
1	COMPUTER- TABLET	1903894	DMPHJQHDDVD2	5/23/2012
1	COMPUTER- TABLET	1903897	DYVHHF2GDVD1	5/23/2012
1	COMPUTER- TABLET	1905879	DMQHLLWPDJ8R	5/23/2012
1	COMPUTER- TABLET	1905894	DMQHLGL0DJ8R	5/23/2012
1	COMPUTER- TABLET	1905895	DMQHL47KDJ8R	5/23/2012
1	COMPUTER- TABLET	1905896	DMQHL8WUDJ8R	5/23/2012
1	COMPUTER- TABLET	1905897	DMQHLPTXDJ8R	5/23/2012
1	COMPUTER-TABLET	1909476	D314200YZ39	5/30/2012
1	COMPUTER- DESKTOP	32XKMS1	32XKMS1	6/13/2012
1	COMPUTER- DESKTOP	33FGMS1	33FGMS1	6/13/2012
1	COMPUTER- DESKTOP	33JGMS1	33JGMS1	6/13/2012
1	COMPUTER- DESKTOP	33KGMS1	33KGMS1	6/13/2012
1	COMPUTER- DESKTOP	33NDMS1	33NDMS1	6/13/2012
1	COMPUTER- DESKTOP	33PHMS1	33PHMS1	6/13/2012
1	COMPUTER- DESKTOP	33SGMS1	33SGMS1	6/13/2012
1	COMPUTER- DESKTOP	33XKMS1	33XKMS1	6/13/2012
1	COMPUTER- DESKTOP	344LMS1	344LMS1	6/13/2012
1	COMPUTER- DESKTOP	346JMS1	346JMS1	6/13/2012
1	COMPUTER- DESKTOP	349LMS1	349LMS1	6/13/2012
1	COMPUTER- DESKTOP	34FKMS1	34FKMS1	6/13/2012
1	COMPUTER- DESKTOP	353LMS1	353LMS1	6/13/2012
1	COMPUTER- DESKTOP	35PDMS1	35PDMS1	6/13/2012
1	COMPUTER- DESKTOP	35RGMS1	35RGMS1	6/13/2012
1	COMPUTER- DESKTOP	35VGMS1	35VGMS1	6/13/2012
1	COMPUTER- DESKTOP	5YZJMS1	5YZJMS1	6/13/2012
1	COMPUTER- DESKTOP	5ZFKMS1	5ZFKMS1	6/13/2012
1	COMPUTER- DESKTOP	5ZNLMS1	5ZNLMS1	6/13/2012
1	COMPUTER- DESKTOP	5ZRFMS1	5ZRFMS1	6/13/2012
1	COMPUTER- DESKTOP	5ZVFMS1	5ZVFMS1	6/13/2012
1	COMPUTER- DESKTOP	H9C74V1	H9C74V1	6/13/2012
1	COMPUTER- TABLET	1905449	DMPHR9W6DVD2	6/13/2012
1	COMPUTER- TABLET	1905478	DMPHRD5CDVD2	6/13/2012
1	COMPUTER- TABLET	1905479	DMPHRCQ8DVD2	6/13/2012
1	COMPUTER- DESKTOP	34PFMS1	34PFMS1	6/21/2012
1	COMPUTER- DESKTOP	34PJMS1	34PJMS1	6/21/2012
1	COMPUTER- DESKTOP	351JMS1	351JMS1	6/21/2012



**April 2022 Inventoried Surplus**  
**Picked Up and Verified 03/23/2022 thru 04/26/2022**

**TOTAL ASSETS**

1	COMPUTER- DESKTOP	353KMS1	353KMS1	6/21/2012
1	COMPUTER- DESKTOP	35GDMS1	35GDMS1	6/21/2012
1	COMPUTER- DESKTOP	5WYFMS1	5WYFMS1	6/21/2012
1	COMPUTER- DESKTOP	5XBKMS1	5XBKMS1	6/21/2012
1	COMPUTER- DESKTOP	3BYJMS1	3BYJMS1	6/25/2012
1	COMPUTER- DESKTOP	5VNKMS1	5VNKMS1	6/25/2012
1	COMPUTER- DESKTOP	5WDDMS1	5WDDMS1	6/25/2012
1	COMPUTER- DESKTOP	608HMS1	608HMS1	6/25/2012
1	COMPUTER- DESKTOP	60DDMS1	60DDMS1	6/25/2012
1	COMPUTER- DESKTOP	615KMS1	615KMS1	6/25/2012
1	COMPUTER- DESKTOP	6JX2JS1	6JX2JS1	6/26/2012
1	COMPUTER- DESKTOP	5L124V1	5L124V1	6/28/2012
1	COMPUTER- DESKTOP	BV9FPS1	BV9FPS1	7/24/2012
1	COMPUTER- DESKTOP	F8HFPS1	F8HFPS1	7/24/2012
1	COMPUTER- TABLET	1907652	DMRJ7T14DFHW	9/4/2012
1	COMPUTER- TABLET	1907653	DMRJ7MNSDFHW	9/4/2012
1	COMPUTER- TABLET	1907654	DMPJ8DQ4DFHW	9/4/2012
1	COMPUTER- TABLET	1907655	DMRJ7UMCDFHW	9/4/2012
1	COMPUTER- TABLET	1907656	DMRJ7PGDDFHW	9/4/2012
1	COMPUTER- TABLET	1907657	DMRJ7QUVDFHW	9/4/2012
1	COMPUTER- TABLET	1907658	DMRJ7T59DFHW	9/4/2012
1	COMPUTER- TABLET	1907660	DMRJ7WS0DFHW	9/4/2012
1	COMPUTER- TABLET	1907661	DMRJ7PYSDFW	9/4/2012
1	COMPUTER- TABLET	1907662	DMRJ7LCHDFHW	9/4/2012
1	COMPUTER- TABLET	1907663	DMRJ7W5ADFHW	9/4/2012
1	COMPUTER- TABLET	1907664	DMPJ81HXDFHW	9/4/2012
1	COMPUTER- TABLET	1907665	DMRJ7MCYDFHW	9/4/2012
1	COMPUTER- TABLET	1907666	DMPJ83VRDFHW	9/4/2012
1	COMPUTER- TABLET	1907667	DMRJ7TEXDFHW	9/4/2012
1	COMPUTER- TABLET	1907668	DMPJ824HDFHW	9/4/2012
1	COMPUTER- TABLET	1907669	DMRJ7UCWDFHW	9/4/2012
1	COMPUTER- TABLET	1907670	DMPJ81T8DFHW	9/4/2012
1	COMPUTER- TABLET	1907671	DMRJ7WRQDFHW	9/4/2012
1	COMPUTER- TABLET	1907672	DMPJ83T7DFHW	9/4/2012
1	COMPUTER- TABLET	1907673	DMPJ83BMDFW	9/4/2012
1	COMPUTER- TABLET	1907674	DMPJ8DC5DFHW	9/4/2012
1	COMPUTER- TABLET	1907675	DMPJ81SKDFHW	9/4/2012
1	COMPUTER- TABLET	1907676	DMPJ82WXDFHW	9/4/2012
1	COMPUTER- TABLET	1907677	DMPJ8DP5DFHW	9/4/2012
1	COMPUTER- TABLET	1907678	DMPJ8DEQDFHW	9/4/2012
1	COMPUTER- TABLET	1907680	DMPJ81YJDFHW	9/4/2012
1	COMPUTER- TABLET	1907681	DMPJ8DNCDFHW	9/4/2012
1	COMPUTER - LAPTOP	1903955	7A087425W	9/19/2012
1	COMPUTER- DESKTOP	4W6WTV1	4W6WTV1	10/10/2012
1	COMPUTER- DESKTOP	4W7YTV1	4W7YTV1	10/10/2012
1	COMPUTER- DESKTOP	4WLXTV1	4WLXTV1	10/10/2012
1	COMPUTER- DESKTOP	4WWVTV1	4WWVTV1	10/10/2012
1	COMPUTER- DESKTOP	4XCXTV1	4XCXTV1	10/10/2012

**April 2022 Inventoried Surplus**  
**Picked Up and Verified 03/23/2022 thru 04/26/2022**

**TOTAL ASSETS**

1	COMPUTER- DESKTOP	4YBXTV1	4YBXTV1	10/10/2012
1	COMPUTER- DESKTOP	4RSWTV1	4RSWTV1	10/19/2012
1	COMPUTER- DESKTOP	4TSVTV1	4TSVTV1	10/19/2012
1	COMPUTER- DESKTOP	4TSXTV1	4TSXTV1	10/19/2012
1	COMPUTER- DESKTOP	4V3YTV1	4V3YTV1	10/19/2012
1	COMPUTER- DESKTOP	4Y7WTV1	4Y7WTV1	10/19/2012
1	COMPUTER- DESKTOP	4YJYTV1	4YJYTV1	10/19/2012
1	COMPUTER- DESKTOP	4Z8YTV1	4Z8YTV1	10/19/2012
1	COMPUTER- DESKTOP	CLXNVV1	CLXNVV1	11/2/2012
1	COMPUTER- DESKTOP	CLYNVV1	CLYNVV1	11/2/2012
1	COMPUTER- DESKTOP	CMJMVV1	CMJMVV1	11/2/2012
1	COMPUTER- DESKTOP	CQCPVV1	CQCPVV1	11/8/2012
1	COMPUTER- DESKTOP	CQRHVV1	CQRHVV1	11/8/2012
1	COMPUTER - LAPTOP	1909441	C02HLOBVDRV6	11/15/2012
1	COMPUTER- TABLET	1909446	DMRJ9A1ADFW	11/15/2012
1	COMPUTER- TABLET	1909455	DMTJ9F2KDFHW	11/15/2012
1	COMPUTER- DESKTOP	CT7MVV1	CT7MVV1	11/19/2012
1	COMPUTER- DESKTOP	5DZLVV1	5DZLVV1	11/26/2012
1	COMPUTER- DESKTOP	1910851	D25JT080DKLH	1/10/2013
1	COMPUTER- TABLET	1918853	DMQJVPQ7F183	1/10/2013
1	COMPUTER- TABLET	1912011	DKVJJ3NDDFW	1/14/2013
1	COMPUTER- DESKTOP	D00VPW1	D00VPW1	2/19/2013
1	COMPUTER - LAPTOP	46XDVW1	46XDVW1	3/12/2013
1	COMPUTER- TABLET	1911991	F5RK5YE7DFHW	3/14/2013
1	COMPUTER- TABLET	1911993	F5RK5YSYDFHW	3/14/2013
1	COMPUTER- TABLET	1911995	F5RK5ZJ1DFHW	3/14/2013
1	COMPUTER- TABLET	1911996	F5RK5ZK0DFHW	3/14/2013
1	COMPUTER- TABLET	1911997	F5RK5ZRDDFW	3/14/2013
1	COMPUTER- TABLET	1911998	F5RK5W8PDFHW	3/14/2013
1	COMPUTER- TABLET	1912000	F5RK5YHPDFHW	3/14/2013
1	COMPUTER- TABLET	1912001	F5RK5Z77DFHW	3/14/2013
1	COMPUTER- TABLET	1912002	F5RK5ZFPDFHW	3/14/2013
1	COMPUTER- TABLET	1912003	F5RK5ZJHDFHW	3/14/2013
1	COMPUTER- TABLET	1912004	F5RK5ZLLDFHW	3/14/2013
1	COMPUTER- TABLET	1912005	F5RK5ZV2DFHW	3/14/2013
1	COMPUTER- TABLET	1912006	F5RK5WASDFHW	3/14/2013
1	COMPUTER- TABLET	1912007	F5RK5Z83DFHW	3/14/2013
1	COMPUTER- TABLET	1912008	F5RK5ZHDDFW	3/14/2013
1	COMPUTER- TABLET	1912009	F5RK5ZJUDFW	3/14/2013
1	COMPUTER- TABLET	1912010	F5RK5ZLSDFHW	3/14/2013
1	COMPUTER - LAPTOP	1911987	C02K5BJPDRV6	3/19/2013
1	COMPUTER - LAPTOP	1911990	C02K70ALDRV6	3/19/2013
1	COPIER	1912606	C2L215111	4/1/2013
1	COPIER	1912608	C2L215080	4/1/2013
1	COMPUTER - LAPTOP	1913456	C02K522XDRV6	5/3/2013
1	COMPUTER - LAPTOP	1915087	C02K520WDRV6	5/3/2013
1	COMPUTER- TABLET	1912648	DMQKLC04F183	5/17/2013
1	COMPUTER- TABLET	1912655	DMTKLBNWF182	5/17/2013

**April 2022 Inventoried Surplus**  
**Picked Up and Verified 03/23/2022 thru 04/26/2022**

**TOTAL ASSETS**

1	COMPUTER- TABLET	1912662	DMTKL6AAF182	5/17/2013
1	COMPUTER- TABLET	1912663	DMRKLMS2F182	5/17/2013
1	COMPUTER- TABLET	1912667	DMTKL3U6F182	5/17/2013
1	COMPUTER- TABLET	1912674	DMTKL431F182	5/17/2013
1	COMPUTER- TABLET	1912678	DMTKL690F182	5/17/2013
1	COMPUTER- TABLET	1912194	F5XKCNAFDFHW	6/11/2013
1	COMPUTER- DESKTOP	3GHBFX1	3GHBFX1	6/27/2013
1	COMPUTER- DESKTOP	3GJDFX1	3GJDFX1	6/27/2013
1	COMPUTER- DESKTOP	GJLMGX1	GJLMGX1	6/27/2013
1	COMPUTER- DESKTOP	HPF2CX1	HPF2CX1	6/27/2013
1	COMPUTER- TABLET	1912186	DKVK605WDFHW	8/22/2013
1	COMPUTER- TABLET	1912187	DYVJVZQWDFHW	8/22/2013
1	COMPUTER- TABLET	1915586	DYTKNX00DFHW	9/12/2013
1	COMPUTER- TABLET	1915590	DYTKNZ5TDFHW	9/12/2013
1	COMPUTER- TABLET	1915603	DYTKNZ3UDFHW	9/12/2013
1	COMPUTER- TABLET	1915608	DYTKNYJADFHW	9/12/2013
1	COMPUTER- TABLET	1915625	DYTKNYH1DFHW	9/12/2013
1	COMPUTER- TABLET	1915639	DYTKNWYSDFHW	9/12/2013
1	COMPUTER- TABLET	1915640	DYVKN0E6DFHW	9/12/2013
1	COMPUTER - LAPTOP	GTZXR1	GTZXR1	9/16/2013
1	COMPUTER LAPTOP	1FWCPX1	1FWCPX1	9/26/2013
1	COMPUTER - LAPTOP	JYMFSY1	JYMFSY1	11/7/2013
1	COMPUTER - LAPTOP	BKRD1Z1	BKRD1Z1	11/19/2013
1	COMPUTER- TABLET	1916219	DMPLP9U0FK11	12/4/2013
1	COMPUTER- TABLET	1916235	DMPLP9H4FK11	12/4/2013
1	COMPUTER- TABLET	1916711	DKVLV1DLDFHW	1/9/2014
1	COMPUTER - LAPTOP	1CR82Z1	1CR82Z1	2/3/2014
1	COMPUTER - LAPTOP	1918392	C02M85VXF5N7	3/26/2014
1	COMPUTER- TABLET	1918352	DYTM8H1UDFHW	3/26/2014
1	COMPUTER- TABLET	1918355	DYTM8NELDFHW	3/26/2014
1	COMPUTER- TABLET	1918357	F5QM80MWDFHW	3/26/2014
1	COMPUTER- TABLET	1918358	DYTM8KWXDFHW	3/26/2014
1	COMPUTER- TABLET	1918359	DYTM8H1PDFHW	3/26/2014
1	COMPUTER- TABLET	1918360	DYTM8LFTDFHW	3/26/2014
1	COMPUTER- TABLET	1918361	F5QM80DJ2DFHW	3/26/2014
1	COMPUTER- TABLET	1918362	DYTM8KVSDFMW	3/26/2014
1	COMPUTER- TABLET	1918364	DYTM8HEZDFHW	3/26/2014
1	COMPUTER- TABLET	1918365	DYTM8H8UDFHW	3/26/2014
1	COMPUTER- TABLET	1918366	DYTM8H8JDFHW	3/26/2014
1	COMPUTER- TABLET	1918367	DYTM8J3WDFHW	3/26/2014
1	COMPUTER- TABLET	1918368	DYTM8GMMDFW	3/26/2014
1	COMPUTER- TABLET	1918369	DYTM8HGVDFW	3/26/2014
1	COMPUTER- TABLET	1918370	DYTM8KUWDFHW	3/26/2014
1	COMPUTER- TABLET	1918371	DYTM8GPBDFHW	3/26/2014
1	COMPUTER- TABLET	1918372	DYTM8HNJDFHW	3/26/2014
1	COMPUTER- TABLET	1918375	DYTM8GNZDFHW	3/26/2014
1	COMPUTER- TABLET	1918377	DYTM8H3ADFHW	3/26/2014
1	COMPUTER- TABLET	1918378	DYTM8NJTDFHW	3/26/2014

**April 2022 Inventoried Surplus**  
**Picked Up and Verified 03/23/2022 thru 04/26/2022**

**TOTAL ASSETS**

1	COMPUTER- TABLET	1918379	DYTM8HX4DFHW	3/26/2014
1	COMPUTER- TABLET	1918380	DYTM8H0BDFHW	3/26/2014
1	COMPUTER- TABLET	1918381	DYTM8NK0DFHW	3/26/2014
1	COMPUTER- TABLET	1918382	DYTL8GFxDFHW	3/26/2014
1	COMPUTER- TABLET	1918383	DYTL8GKSDFHW	3/26/2014
1	COMPUTER- TABLET	1918384	DYTL8KSYDFHW	3/26/2014
1	COMPUTER- TABLET	1918387	DYTL8KKPDFHW	3/26/2014
1	COMPUTER- TABLET	1918388	DYTL8JP1DFHW	3/26/2014
1	COMPUTER- TABLET	1918390	DYTL8B43DFHW	3/26/2014
1	COMPUTER-TEACHER LAPTOP	1915864	CPWM224TDTY3	3/28/2014
1	COMPUTER- TABLET	1918351	DKVM227TDFHW	4/14/2014
1	COMPUTER- DESKTOP	9GK9L02	9GK9L02	5/14/2014
1	COMPUTER- TABLET	1919455	DMPML9APFK15	5/19/2014
1	COMPUTER- TABLET	1919456	DMPML88NFK15	5/19/2014
1	COMPUTER- TABLET	1919468	DMPML84PFK15	5/19/2014
1	COMPUTER- DESKTOP	D1Z5M02	D1Z5M02	6/9/2014
1	COMPUTER- DESKTOP	D385M02	D385M02	6/9/2014
1	COMPUTER- DESKTOP	D392M02	D392M02	6/9/2014
1	COMPUTER- DESKTOP	D397M02	D397M02	6/9/2014
1	COMPUTER- DESKTOP	D3B2M02	D3B2M02	6/9/2014
1	COMPUTER- DESKTOP	D3H3M02	D3H3M02	6/9/2014
1	COMPUTER- DESKTOP	D4P4M02	D4P4M02	6/9/2014
1	COMPUTER- DESKTOP	D4Q1M02	D4Q1M02	6/9/2014
1	COMPUTER- DESKTOP	D4S6M02	D4S6M02	6/9/2014
1	COMPUTER- DESKTOP	D5T5M02	D5T5M02	6/9/2014
1	COMPUTER- DESKTOP	JFV2M02	JFV2M02	6/11/2014
1	COMPUTER- DESKTOP	D3F1M02	D3F1M02	6/16/2014
1	COMPUTER- DESKTOP	D3Q2M02	D3Q2M02	6/16/2014
1	COMPUTER- DESKTOP	D4DZM02	D4Z2M02	6/16/2014
1	COMPUTER- TABLET	1920420	F4KMPA7SFCM5	6/16/2014
1	COMPUTER- TABLET	1920426	F4KMPC4YFCM5	6/16/2014
1	COMPUTER- TABLET	1920429	F4KMPCX4FCM5	6/16/2014
1	COMPUTER- DESKTOP	D484M02	D484M02	6/17/2014
1	COMPUTER- DESKTOP	D4D5M02	D4D5M02	6/17/2014
1	COMPUTER- DESKTOP	D5M2M02	D5M2M02	6/17/2014
1	COMPUTER- TABLET	1920231	DMPMPP4NF182	6/17/2014
1	COMPUTER- DESKTOP	24G2V12	24G2V12	6/19/2014
1	COMPUTER- DESKTOP	24K3V12	24K3V12	6/19/2014
1	COMPUTER - LAPTOP	51WMF12	51WMF12	6/30/2014
1	COMPUTER- DESKTOP	20QRW12	20QRW12	6/30/2014
1	COMPUTER- DESKTOP	88FFM02	88FFM02	6/30/2014
1	COMPUTER- DESKTOP	8DVDM02	8DVDM02	6/30/2014
1	COMPUTER- DESKTOP	8HZFM02	8HZFM02	6/30/2014
1	COMPUTER- DESKTOP	B64HL02	B64HL02	6/30/2014
1	COMPUTER - LAPTOP	707Q512	707Q512	7/21/2014
1	COMPUTER - LAPTOP	8LBQ612	8LBQ612	7/31/2014
1	COMPUTER - LAPTOP	124SF12	124SF12	8/7/2014
1	COMPUTER - LAPTOP	1Z8SF12	1Z8SF12	8/7/2014

**April 2022 Inventoried Surplus**  
**Picked Up and Verified 03/23/2022 thru 04/26/2022**

**TOTAL ASSETS**

1	COMPUTER - LAPTOP	473SF12	473SF12	8/7/2014
1	COMPUTER - LAPTOP	576SF12	576SF12	8/7/2014
1	COMPUTER - LAPTOP	581SF12	581SF12	8/7/2014
1	COMPUTER - LAPTOP	5CSRF12	5CSRF12	8/7/2014
1	COMPUTER - LAPTOP	6K8SF12	6K8SF12	8/7/2014
1	COMPUTER - LAPTOP	6V1RF12	6V1RF12	8/7/2014
1	COMPUTER - LAPTOP	7S5SF12	7S5SF12	8/7/2014
1	COMPUTER - LAPTOP	7Y2SF12	7Y2SF12	8/7/2014
1	COMPUTER - LAPTOP	7Y3SF12	7Y3SF12	8/7/2014
1	COMPUTER - LAPTOP	88VRF12	88VRF12	8/7/2014
1	COMPUTER - LAPTOP	95XRF12	95XRF12	8/7/2014
1	COMPUTER - LAPTOP	9XDSF12	9XDSF12	8/7/2014
1	COMPUTER - LAPTOP	BFPRF12	BFPRF12	8/7/2014
1	COMPUTER - LAPTOP	DG8SF12	DG8SF12	8/7/2014
1	COMPUTER - LAPTOP	DM1SF12	DM1SF12	8/7/2014
1	COMPUTER - LAPTOP	FGXRF12	FGXRF12	8/7/2014
1	COMPUTER - LAPTOP	FY0RF12	FY0RF12	8/7/2014
1	COMPUTER - LAPTOP	GC5SF12	GC5SF12	8/7/2014
1	COMPUTER - LAPTOP	GLQRF12	GLQRF12	8/7/2014
1	COMPUTER - LAPTOP	HG3SF12	HG3SF12	8/7/2014
1	COMPUTER - LAPTOP	HNZRF12	HNZRF12	8/7/2014
1	COMPUTER - LAPTOP	HR4SF12	HR4SF12	8/7/2014
1	COMPUTER - LAPTOP	HTXRF12	HTXRF12	8/7/2014
1	COMPUTER- TABLET	1920712	DQTMX3R8FK11	8/7/2014
1	COMPUTER- TABLET	1920713	DLXMXU7JFK11	8/7/2014
1	COMPUTER- TABLET	1920714	DQTMX0M1FK11	8/7/2014
1	COMPUTER- TABLET	1920717	DQTMX37TFK11	8/7/2014
1	COMPUTER- TABLET	1920718	DLXMXUUQFK11	8/7/2014
1	COMPUTER- TABLET	1920719	DLXMXU8SFK11	8/7/2014
1	COMPUTER- TABLET	1920720	DLXMXMM5FK11	8/7/2014
1	COMPUTER- TABLET	1920721	DLXMX47WFK11	8/7/2014
1	COMPUTER- TABLET	1920723	DLXMXU4NFK11	8/7/2014
1	COMPUTER- TABLET	1920725	DLXMXVKEFK11	8/7/2014
1	COMPUTER- TABLET	1920726	DLXMXURBFK11	8/7/2014
1	COMPUTER- TABLET	1920728	DQTMX2JKFK11	8/7/2014
1	COMPUTER- TABLET	1920731	DQTMX20UFK11	8/7/2014
1	COMPUTER- TABLET	1920732	DQTMX2MMFK11	8/7/2014
1	COMPUTER- TABLET	1920733	DQTMX2KWFK11	8/7/2014
1	COMPUTER- TABLET	1920734	DLXMXUJHFK11	8/7/2014
1	COMPUTER- TABLET	1920739	DLXMXUDZFK11	8/7/2014
1	COMPUTER- TABLET	1920740	DLXMXFUDFK11	8/7/2014
1	COMPUTER- TABLET	1920741	DLXMXUJ4FK11	8/7/2014
1	COMPUTER LAPTOP	2FPMH12	2FPMH12	8/8/2014
1	COMPUTER- TABLET	1919001	DMQN5556F182	8/12/2014
1	STUDENT RESPONSE SYSTEM - REFRESH	1920617		8/21/2014
1	STUDENT RESPONSE SYSTEM - REFRESH	1920618		8/21/2014
1	STUDENT RESPONSE SYSTEM - REFRESH	1920619		8/21/2014
1	STUDENT RESPONSE SYSTEM - REFRESH	1920620		8/21/2014

**April 2022 Inventoried Surplus**  
**Picked Up and Verified 03/23/2022 thru 04/26/2022**

**TOTAL ASSETS**

1	STUDENT RESPONSE SYSTEM - REFRESH	1920621		8/21/2014
1	STUDENT RESPONSE SYSTEM - REFRESH	1920624		8/21/2014
1	STUDENT RESPONSE SYSTEM - REFRESH	1920627		8/21/2014
1	STUDENT RESPONSE SYSTEM - REFRESH	1920629		8/21/2014
1	STUDENT RESPONSE SYSTEM - REFRESH	1920632		8/21/2014
1	STUDENT RESPONSE SYSTEM - REFRESH	1920633		8/21/2014
1	STUDENT RESPONSE SYSTEM - REFRESH	1920634		8/21/2014
1	STUDENT RESPONSE SYSTEM - REFRESH	1920635		8/21/2014
1	STUDENT RESPONSE SYSTEM - REFRESH	1920639		8/21/2014
1	STUDENT RESPONSE SYSTEM - REFRESH	1920641		8/21/2014
1	STUDENT RESPONSE SYSTEM - REFRESH	1920642		8/21/2014
1	STUDENT RESPONSE SYSTEM - REFRESH	1920646		8/21/2014
1	STUDENT RESPONSE SYSTEM - REFRESH	1920647		8/21/2014
1	STUDENT RESPONSE SYSTEM - REFRESH	1920649		8/21/2014
1	STUDENT RESPONSE SYSTEM - REFRESH	1920651		8/21/2014
1	STUDENT RESPONSE SYSTEM - REFRESH	1920655		8/21/2014
1	STUDENT RESPONSE SYSTEM - REFRESH	1920656		8/21/2014
1	STUDENT RESPONSE SYSTEM - REFRESH	1920660		8/21/2014
1	STUDENT RESPONSE SYSTEM - REFRESH	1920661		8/21/2014
1	COMPUTER- TABLET	1928671	DMPN71E9F182	8/25/2014
1	COMPUTER- TABLET	1928672	DMPN72B6F182	8/25/2014
1	COMPUTER- TABLET	1928673	DMPN72A8F182	8/25/2014
1	COMPUTER- TABLET	1928674	DMPN7111F182	8/25/2014
1	COMPUTER- TABLET	1928675	DMPN72DBF182	8/25/2014
1	COMPUTER- TABLET	1928681	DMPN77ZMF182	8/25/2014
1	COMPUTER- TABLET	1928696	DMPN72K3F182	8/25/2014
1	COMPUTER - LAPTOP	2SFGJ12	2SFGJ12	9/2/2014
1	COMPUTER - LAPTOP	5RCGJ12	5RCGJ12	9/2/2014
1	COMPUTER - LAPTOP	B5FGJ12	B5FGJ12	9/2/2014
1	COMPUTER - LAPTOP	B7GGJ12	B7GGJ12	9/2/2014
1	COMPUTER - LAPTOP	CDFGJ12	CDFGJ12	9/2/2014
1	COMPUTER - LAPTOP	DPCGJ12	DPCGJ12	9/2/2014
1	COMPUTER- TABLET	1920775	DLXN5ADJFK15	9/2/2014
1	COMPUTER - LAPTOP	46QT912	46QT912	9/9/2014
1	COMPUTER- DESKTOP	BJSBY12	BJSBY12	9/11/2014
1	COMPUTER- TABLET	1929445	DMPND7KYF185	9/30/2014
1	COMPUTER- TABLET	1929461	DMPND4VBF185	9/30/2014
1	COMPUTER- TABLET	1929151	DMPN9VMMF182	10/7/2014
1	COMPUTER- TABLET	1929306	DMPND3CSFK11	10/9/2014
1	COMPUTER- TABLET	1929309	DMPND2KHFK11	10/9/2014
1	COMPUTER- TABLET	1929312	DMPND4Y2FK11	10/9/2014
1	COMPUTER- TABLET	1929323	DLXN1ABQFK11	10/15/2014
1	COMPUTER - LAPTOP	3QMQM12	3QMQM12	10/21/2014
1	STUDENT RESPONSE SYSTEM - REFRESH	1930129		11/10/2014
1	STUDENT RESPONSE SYSTEM - REFRESH	1930131		11/10/2014
1	COMPUTER- TABLET	1929660	DMQMXWQEFK10	11/18/2014
1	COMPUTER- TABLET	1929664	DMQMXWSGFK10	11/18/2014
1	COMPUTER- TABLET	1929666	DMPMXNURFK10	11/18/2014

**April 2022 Inventoried Surplus**  
**Picked Up and Verified 03/23/2022 thru 04/26/2022**

**TOTAL ASSETS**

1	COMPUTER- TABLET	1929668	DMQMXWX1FK10	11/18/2014
1	COMPUTER- TABLET	1931893	DMPNC0C6FK11	11/18/2014
1	STUDENT RESPONSE SYSTEM - REFRESH	1925901		12/2/2014
1	STUDENT RESPONSE SYSTEM - REFRESH	1925904		12/2/2014
1	STUDENT RESPONSE SYSTEM - REFRESH	1925908		12/2/2014
1	STUDENT RESPONSE SYSTEM - REFRESH	1925918		12/2/2014
1	STUDENT RESPONSE SYSTEM - REFRESH	1925925		12/2/2014
1	STUDENT RESPONSE SYSTEM - REFRESH	1925937		12/2/2014
1	STUDENT RESPONSE SYSTEM - REFRESH	1925941		12/2/2014
1	STUDENT RESPONSE SYSTEM - REFRESH	1925954		12/2/2014
1	STUDENT RESPONSE SYSTEM - REFRESH	1925957		12/2/2014
1	STUDENT RESPONSE SYSTEM - REFRESH	1925959		12/2/2014
1	COMPUTER- TABLET	1930218	DMQMHHMXFK10	12/3/2014
1	COMPUTER- TABLET	1930239	DMPMJ821FK10	12/3/2014
1	COMPUTER- TABLET	1930242	DMPMJ8RSFK10	12/3/2014
1	COMPUTER- TABLET	1931056	DMRMRMQEFK10	12/3/2014
1	STUDENT RESPONSE SYSTEM - REFRESH	1930166		12/4/2014
1	STUDENT RESPONSE SYSTEM - REFRESH	1930177		12/4/2014
1	STUDENT RESPONSE SYSTEM - REFRESH	1930178		12/4/2014
1	STUDENT RESPONSE SYSTEM - REFRESH	1926404		12/9/2014
1	STUDENT RESPONSE SYSTEM - REFRESH	1926409		12/9/2014
1	COMPUTER- TABLET	1932318	DMRN7MGCFK10	1/8/2015
1	COMPUTER- TABLET	1932326	DMPN83Q1FK10	1/8/2015
1	COMPUTER- TABLET	1932330	DMPN78CXFK10	1/8/2015
1	COMPUTER- TABLET	1932340	DMPN81A7FK10	1/8/2015
1	COMPUTER- TABLET	1932341	DMQN7LGPFK10	1/8/2015
1	COMPUTER- TABLET	1932342	DMPN82V2FK10	1/8/2015
1	COMPUTER- TABLET	1932344	DMPN82PDFK10	1/8/2015
1	COMPUTER- TABLET	1932345	DMPN81TEFK10	1/8/2015
1	COMPUTER- DESKTOP	FSXZM22	FSXZM22	1/12/2015
1	COMPUTER- TABLET	1932872	DMQN6M6XFK11	1/16/2015
1	COMPUTER- TABLET	1932873	DMQN6NAQFK11	1/16/2015
1	STUDENT RESPONSE SYSTEM - REFRESH	1927651		1/23/2015
1	STUDENT RESPONSE SYSTEM - REFRESH	1927652		1/23/2015
1	STUDENT RESPONSE SYSTEM - REFRESH	1927654		1/23/2015
1	STUDENT RESPONSE SYSTEM - REFRESH	1927656		1/23/2015
1	STUDENT RESPONSE SYSTEM - REFRESH	1927659		1/23/2015
1	STUDENT RESPONSE SYSTEM - REFRESH	1927661		1/23/2015
1	STUDENT RESPONSE SYSTEM - REFRESH	1927665		1/23/2015
1	STUDENT RESPONSE SYSTEM - REFRESH	1952664		1/23/2015
1	PROJECTOR- VIDEO - REFRESH	1945162	PDBBE03334000	2/10/2015
1	COPIER	1937084	CELD49184	2/13/2015
1	COPIER	1937085	CAKD17297	2/13/2015
1	COMPUTER- TABLET	1934037	DMPN7K68FK10	2/23/2015
1	COMPUTER- TABLET	1934038	DMPN8MX3FK10	2/23/2015
1	COMPUTER - LAPTOP	C4JB832	C4JB832	3/9/2015
1	COMPUTER - LAPTOP	H9P6532	H9P6532	3/9/2015
1	COPIER	1936540	CELD53161	3/13/2015

**April 2022 Inventoried Surplus**  
**Picked Up and Verified 03/23/2022 thru 04/26/2022**

**TOTAL ASSETS**

1	COMPUTER - LAPTOP	JYZYN32	JYZYN32	3/16/2015
1	COMPUTER - LAPTOP	4XMP432	4XMP432	3/18/2015
1	COMPUTER - LAPTOP	68XL732	68XL732	3/18/2015
1	COMPUTER - LAPTOP	7MXL732	7MXL732	3/18/2015
1	COMPUTER - LAPTOP	7YMP432	7YMP432	3/18/2015
1	COMPUTER - LAPTOP	88XL732	88XL732	3/18/2015
1	COMPUTER - LAPTOP	8RMP432	8RMP432	3/18/2015
1	COMPUTER - LAPTOP	91XL732	91XL732	3/18/2015
1	COMPUTER - LAPTOP	D3XL732	D3XL732	3/18/2015
1	COMPUTER - LAPTOP	D6XL732	D6XL732	3/18/2015
1	COMPUTER - LAPTOP	FCXL732	FCXL732	3/18/2015
1	COMPUTER - LAPTOP	GGXL732	GGXL732	3/18/2015
1	COMPUTER - LAPTOP	H1XL732	H1XL732	3/18/2015
1	COMPUTER - LAPTOP	J0XL732	J0XL732	3/18/2015
1	COMPUTER - LAPTOP	JBXL732	JBXL732	3/18/2015
1	COMPUTER - LAPTOP	10ZSD32	10ZSD32	4/3/2015
1	COMPUTER - LAPTOP	2BZSD32	2BZSD32	4/3/2015
1	COMPUTER - LAPTOP	3FZSD32	3FZSD32	4/3/2015
1	COMPUTER - LAPTOP	50ZSD32	50ZSD32	4/3/2015
1	COMPUTER - LAPTOP	60ZSD32	60ZSD32	4/3/2015
1	COMPUTER - LAPTOP	62ZSD32	62ZSD32	4/3/2015
1	COMPUTER - LAPTOP	C0ZSD32	C0ZSD32	4/3/2015
1	COMPUTER - LAPTOP	CDZSD32	CDZSD32	4/3/2015
1	COMPUTER - LAPTOP	DBZSD32	DBZSD32	4/3/2015
1	COMPUTER - LAPTOP	DCZSD32	DCZSD32	4/3/2015
1	COMPUTER - LAPTOP	J9ZSD32	Z9ZSD32	4/3/2015
1	COMPUTER - LAPTOP	JCZSD32	JCZSD32	4/3/2015
1	COMPUTER- TABLET	1936510	DMPPD4LEFK11	4/13/2015
1	COMPUTER- TABLET	1936512	DMPPD52ZFK11	4/13/2015
1	COMPUTER- TABLET	1936516	DMPPD3XVFK11	4/13/2015
1	COMPUTER- TABLET	1936535	DMPPD123FK11	4/13/2015
1	COMPUTER - LAPTOP	172TD32	172TD32	4/15/2015
1	COMPUTER - LAPTOP	49CYF32	49CYF32	4/15/2015
1	COMPUTER- LAPTOP REFRESH	149KM32	149KM32	4/22/2015
1	COMPUTER - LAPTOP	3LV9D32	3LV9D32	4/30/2015
1	COMPUTER - LAPTOP	7MV9D32	7MV9D32	4/30/2015
1	COMPUTER- TABLET	1934062	DMPPD5H7FK11	5/7/2015
1	COMPUTER- TABLET	1934067	DMPPD35SFK11	5/7/2015
1	COMPUTER- TABLET	1934069	DMPPD63PFK11	5/7/2015
1	COMPUTER- TABLET	1934074	DMPPD5G8FK11	5/7/2015
1	COMPUTER- TABLET	1934087	DMPPD6AWFK11	5/7/2015
1	COMPUTER- TABLET	1934092	DMPPD3D5FK11	5/7/2015
1	COMPUTER- TABLET	1934117	DMPPD635FK11	5/7/2015
1	COMPUTER- TABLET	1934118	DMPPD3G2FK11	5/7/2015
1	COMPUTER- TABLET	1934119	DMPPD2RFFK11	5/7/2015
1	COMPUTER- TABLET	1934122	DMPPD1Y9FK11	5/7/2015
1	COMPUTER- TABLET	1934127	DMPPD1WZFK11	5/7/2015
1	COMPUTER- TABLET	1934134	DMPPD38NFK11	5/7/2015



**April 2022 Inventoried Surplus**  
**Picked Up and Verified 03/23/2022 thru 04/26/2022**

**TOTAL ASSETS**

1	COMPUTER - LAPTOP	1XX0D32	1XX0D32	5/18/2015
1	COMPUTER - LAPTOP	2XX0D32	2XX0D32	5/18/2015
1	COMPUTER - LAPTOP	4XX0D32	4XX0D32	5/18/2015
1	COMPUTER - LAPTOP	JWX0D32	JWX0D32	5/18/2015
1	COMPUTER- LAPTOP REFRESH	BLS5M32	BLS5M32	5/28/2015
1	COMPUTER - LAPTOP	7X3DB32	7X3DB32	6/1/2015
1	COMPUTER- LAPTOP REFRESH	32WPM32	32WPM32	6/2/2015
1	SCREEN/DEVICE-INTERACTIVE WHITE BOARD	1953868	E47140195	6/8/2015
1	STUDENT RESPONSE SYSTEM - REFRESH	1939963		6/8/2015
1	STUDENT RESPONSE SYSTEM - REFRESH	1939889		6/11/2015
1	STUDENT RESPONSE SYSTEM - REFRESH	1939890		6/11/2015
1	STUDENT RESPONSE SYSTEM - REFRESH	1939891		6/11/2015
1	STUDENT RESPONSE SYSTEM - REFRESH	1939892		6/11/2015
1	STUDENT RESPONSE SYSTEM - REFRESH	1939893		6/11/2015
1	STUDENT RESPONSE SYSTEM - REFRESH	1939894		6/11/2015
1	STUDENT RESPONSE SYSTEM - REFRESH	1939895		6/11/2015
1	STUDENT RESPONSE SYSTEM - REFRESH	1939896		6/11/2015
1	STUDENT RESPONSE SYSTEM - REFRESH	1939898		6/11/2015
1	STUDENT RESPONSE SYSTEM - REFRESH	1939899		6/11/2015
1	STUDENT RESPONSE SYSTEM - REFRESH	1939901		6/11/2015
1	STUDENT RESPONSE SYSTEM - REFRESH	1939902		6/11/2015
1	STUDENT RESPONSE SYSTEM - REFRESH	1939903		6/11/2015
1	STUDENT RESPONSE SYSTEM - REFRESH	1939904		6/11/2015
1	STUDENT RESPONSE SYSTEM - REFRESH	1939905		6/11/2015
1	STUDENT RESPONSE SYSTEM - REFRESH	1939906		6/11/2015
1	STUDENT RESPONSE SYSTEM - REFRESH	1939907		6/11/2015
1	STUDENT RESPONSE SYSTEM - REFRESH	1939908		6/11/2015
1	STUDENT RESPONSE SYSTEM - REFRESH	1939909		6/11/2015
1	STUDENT RESPONSE SYSTEM - REFRESH	1939910		6/11/2015
1	STUDENT RESPONSE SYSTEM - REFRESH	1939912		6/11/2015
1	STUDENT RESPONSE SYSTEM - REFRESH	1939913		6/11/2015
1	STUDENT RESPONSE SYSTEM - REFRESH	1939914		6/11/2015
1	STUDENT RESPONSE SYSTEM - REFRESH	1939915		6/11/2015
1	STUDENT RESPONSE SYSTEM - REFRESH	1939917		6/11/2015
1	STUDENT RESPONSE SYSTEM - REFRESH	1939919		6/11/2015
1	STUDENT RESPONSE SYSTEM - REFRESH	1939921		6/11/2015
1	STUDENT RESPONSE SYSTEM - REFRESH	1939922		6/11/2015
1	STUDENT RESPONSE SYSTEM - REFRESH	1939923		6/11/2015
1	STUDENT RESPONSE SYSTEM - REFRESH	1939924		6/11/2015
1	COMPUTER- LAPTOP REFRESH	1K43R32	1K43R32	6/16/2015
1	COMPUTER- LAPTOP REFRESH	3GC5R32	3GC5R32	6/16/2015
1	COMPUTER- TABLET	1939197	DMPPDY91FK10	6/17/2015
1	COMPUTER- TABLET	1939198	DMQPD7AAF10	6/17/2015
1	COMPUTER- TABLET	1939204	DMQPD55AF10	6/17/2015
1	COMPUTER- TABLET	1939224	DMQPD5BFF10	6/17/2015
1	COMPUTER- TABLET	1939231	DMQPD7YFK10	6/17/2015
1	COMPUTER- TABLET	1939233	DMQPD4J8FK10	6/17/2015
1	COMPUTER- TABLET	1939239	DMPPDWBDF10	6/17/2015

**April 2022 Inventoried Surplus**  
**Picked Up and Verified 03/23/2022 thru 04/26/2022**

**TOTAL ASSETS**

1	COMPUTER- TABLET	1939240	DMPPDWAWFK10	6/17/2015
1	COMPUTER- LAPTOP REFRESH	52N7R32	52N7R32	6/23/2015
1	COMPUTER- LAPTOP REFRESH	3R69M32	3R69M32	6/24/2015
1	COMPUTER- LAPTOP REFRESH	6VHRM32	6VHRM32	6/24/2015
1	STUDENT RESPONSE SYSTEM - REFRESH	1927972		6/24/2015
1	STUDENT RESPONSE SYSTEM - REFRESH	1927977		6/24/2015
1	STUDENT RESPONSE SYSTEM - REFRESH	1927980		6/24/2015
1	STUDENT RESPONSE SYSTEM - REFRESH	1927982		6/24/2015
1	STUDENT RESPONSE SYSTEM - REFRESH	1927984		6/24/2015
1	STUDENT RESPONSE SYSTEM - REFRESH	1927994		6/24/2015
1	STUDENT RESPONSE SYSTEM - REFRESH	1927996		6/24/2015
1	STUDENT RESPONSE SYSTEM - REFRESH	1927997		6/24/2015
1	STUDENT RESPONSE SYSTEM - REFRESH	1927999		6/24/2015
1	STUDENT RESPONSE SYSTEM - REFRESH	1940165		6/24/2015
1	STUDENT RESPONSE SYSTEM - REFRESH	1940169		6/24/2015
1	COMPUTER - LAPTOP	1939528	23KXR32	6/29/2015
1	COMPUTER - LAPTOP	DWCMR32	DWCMR32	6/29/2015
1	COMPUTER - LAPTOP	3NLFR32	3NLFR32	6/30/2015
1	COMPUTER - LAPTOP	43JGR32	43JGR32	6/30/2015
1	COMPUTER - LAPTOP	7854H52	7854H52	6/30/2015
1	COMPUTER - LAPTOP	C5L4B32	C5L4B32	6/30/2015
1	COMPUTER - LAPTOP	CGBRM32	CGBRM32	6/30/2015
1	COMPUTER - LAPTOP	D5L4B32	D5L4B32	6/30/2015
1	COMPUTER - LAPTOP	FHVMM32	FHVMM32	6/30/2015
1	COMPUTER- DESKTOP	3HSQG42	3HSQG42	6/30/2015
1	COMPUTER- DESKTOP	6MDQG42	6MDQG42	6/30/2015
1	COMPUTER-TEACHER LAPTOP	1940092	C1MPF68ZDTY3	6/30/2015
1	STUDENT RESPONSE SYSTEM	1940388		6/30/2015
1	COMPUTER- TABLET	1943958	DMPPXCU5FK11	8/12/2015
1	STUDENT RESPONSE SYSTEM	1943476		8/27/2015
1	STUDENT RESPONSE SYSTEM	1943477		8/27/2015
1	STUDENT RESPONSE SYSTEM	1943480		8/27/2015
1	STUDENT RESPONSE SYSTEM	1943481		8/27/2015
1	STUDENT RESPONSE SYSTEM	1943483		8/27/2015
1	STUDENT RESPONSE SYSTEM	1943484		8/27/2015
1	STUDENT RESPONSE SYSTEM	1943485		8/27/2015
1	COMPUTER- TABLET	1944430	DMPQ37BCFCM5	8/28/2015
1	COMPUTER- TABLET	1944432	DMPQ29R5FCM5	8/28/2015
1	COMPUTER- TABLET	1944440	DMPQ3876FCM5	8/28/2015
1	COMPUTER- TABLET	1944462	DMPQ370FFCM5	8/28/2015
1	COMPUTER- TABLET	1944508	DMPQ34ZDFCM5	8/28/2015
1	COMPUTER- TABLET	1944518	DMPQ2AR1FCM5	8/28/2015
1	COMPUTER- TABLET	1944613	DMPPTTRGFK11	9/4/2015
1	COMPUTER-TEACHER LAPTOP	1944559	C1MQ87PFDTY3	9/4/2015
1	COMPUTER-TEACHER LAPTOP	1944564	C1MQ87P9DTY3	9/4/2015
1	COMPUTER - LAPTOP	2MVRK52	2MVRK52	9/10/2015
1	COMPUTER - LAPTOP	3HVRK52	3HVRK52	9/10/2015
1	COMPUTER - LAPTOP	4FVRK52	4FVRK52	9/10/2015

**April 2022 Inventoried Surplus**  
**Picked Up and Verified 03/23/2022 thru 04/26/2022**

**TOTAL ASSETS**

1	COMPUTER - LAPTOP	8RWRK52	8RWRK52	9/10/2015
1	COMPUTER - LAPTOP	CHVRK52	CHVRK52	9/10/2015
1	COMPUTER - LAPTOP	DLVRK52	DLVRK52	9/10/2015
1	COMPUTER - LAPTOP	FHVRK52	FHVRK52	9/10/2015
1	COMPUTER - LAPTOP	GPWRK52	GPWRK52	9/10/2015
1	COMPUTER - LAPTOP	HLVRK52	HLVRK52	9/10/2015
1	COMPUTER- DESKTOP	1940734	48WWV52	10/7/2015
1	COMPUTER- DESKTOP	1940737	48VZV52	10/7/2015
1	COMPUTER - LAPTOP	6Y2YL52	6Y2YL52	10/14/2015
1	COMPUTER - LAPTOP	1W6SY52	1W6SY52	10/26/2015
1	COMPUTER- DESKTOP REFRESH	79MVM52	79MVM52	10/27/2015
1	COMPUTER - LAPTOP	9S0BN52	9S0BN52	11/9/2015
1	COMPUTER- DESKTOP REFRESH	2PT7V62	2PT7V62	11/19/2015
1	COMPUTER - LAPTOP	3WMN582	3WMN582	12/8/2015
1	COMPUTER - LAPTOP	20BQP52	20BQP52	12/14/2015
1	COMPUTER - LAPTOP	51BQP52	51BQP52	12/14/2015
1	COMPUTER - LAPTOP	5BFQP52	5BFQP52	12/14/2015
1	COMPUTER - LAPTOP	60BQP52	60BQP52	12/14/2015
1	COMPUTER - LAPTOP	91BQP52	91BQP52	12/14/2015
1	COMPUTER - LAPTOP	98FQP52	98FQP52	12/14/2015
1	COMPUTER - LAPTOP	B1BQP52	B1BQP52	12/14/2015
1	COMPUTER - LAPTOP	HZ9QP52	HZ9QP52	12/14/2015
1	COMPUTER - LAPTOP	15BP582	15BP582	1/4/2016
1	COMPUTER - LAPTOP	51RQ582	51RQ582	1/4/2016
1	COMPUTER - LAPTOP	F4BP582	F4BP582	1/4/2016
1	COMPUTER - LAPTOP	GWMN582	GWMN582	1/4/2016
1	COMPUTER - LAPTOP	GZQQ582	GZQQ582	1/4/2016
1	COMPUTER - LAPTOP	1XMN582	1XMN582	1/5/2016
1	COMPUTER - LAPTOP	1YMN582	1YMN582	1/5/2016
1	COMPUTER - LAPTOP	2RMN582	2RMN582	1/5/2016
1	COMPUTER - LAPTOP	2TMN582	2TMN582	1/5/2016
1	COMPUTER - LAPTOP	2YMN582	2YMN582	1/5/2016
1	COMPUTER - LAPTOP	3QMN582	3QMN582	1/5/2016
1	COMPUTER - LAPTOP	3TMN582	3TMN582	1/5/2016
1	COMPUTER - LAPTOP	3YMN582	3YMN582	1/5/2016
1	COMPUTER - LAPTOP	4TMN582	4TMN582	1/5/2016
1	COMPUTER - LAPTOP	4WMN582	4WMN582	1/5/2016
1	COMPUTER - LAPTOP	5SMN582	5SMN582	1/5/2016
1	COMPUTER - LAPTOP	5TMN582	5TMN582	1/5/2016
1	COMPUTER - LAPTOP	5WMN582	5WMN582	1/5/2016
1	COMPUTER - LAPTOP	5XMN582	5XMN582	1/5/2016
1	COMPUTER - LAPTOP	7QMN582	7QMN582	1/5/2016
1	COMPUTER - LAPTOP	7XMN582	7XMN582	1/5/2016
1	COMPUTER - LAPTOP	8RMN582	8RMN582	1/5/2016
1	COMPUTER - LAPTOP	8VMN582	8VMN582	1/5/2016
1	COMPUTER - LAPTOP	9QMN582	9QMN582	1/5/2016
1	COMPUTER - LAPTOP	9TMN582	9TMN582	1/5/2016
1	COMPUTER - LAPTOP	9VMN582	9VMN582	1/5/2016

**April 2022 Inventoried Surplus**  
**Picked Up and Verified 03/23/2022 thru 04/26/2022**

**TOTAL ASSETS**

1	COMPUTER - LAPTOP	BRMN582	BRMN582	1/5/2016
1	COMPUTER - LAPTOP	BSMN582	BSMN582	1/5/2016
1	COMPUTER - LAPTOP	BWMN582	BWMN582	1/5/2016
1	COMPUTER - LAPTOP	C3BP582	C3BP582	1/5/2016
1	COMPUTER - LAPTOP	CTMN582	CTMN582	1/5/2016
1	COMPUTER - LAPTOP	CXMN582	CXMN582	1/5/2016
1	COMPUTER - LAPTOP	DQMN582	DQMN582	1/5/2016
1	COMPUTER - LAPTOP	DWMN582	DWMN582	1/5/2016
1	COMPUTER - LAPTOP	FQMN582	FQMN582	1/5/2016
1	COMPUTER - LAPTOP	FSMN582	FSMN582	1/5/2016
1	COMPUTER - LAPTOP	GXMN582	GXMN582	1/5/2016
1	COMPUTER - LAPTOP	HRMN582	HRMN582	1/5/2016
1	COMPUTER - LAPTOP	JPMN582	JPMN582	1/5/2016
1	COMPUTER - LAPTOP	JVMN582	JVMN582	1/5/2016
1	COPIER	1946254	CEKE45001	1/14/2016
1	COMPUTER- LAPTOP - REFRESH	1GBX782	1GBX782	2/5/2016
1	COMPUTER- LAPTOP - REFRESH	1GFY782	1GFY782	2/5/2016
1	COMPUTER- LAPTOP - REFRESH	2CBX782	2CBX782	2/5/2016
1	COMPUTER- LAPTOP - REFRESH	2GFY782	2GFY782	2/5/2016
1	COMPUTER- LAPTOP - REFRESH	2HFX782	2HFX782	2/5/2016
1	COMPUTER- LAPTOP - REFRESH	2JFY782	2JFY782	2/5/2016
1	COMPUTER- LAPTOP - REFRESH	37BX782	37BX782	2/5/2016
1	COMPUTER- LAPTOP - REFRESH	3QBX782	3QBX782	2/5/2016
1	COMPUTER- LAPTOP - REFRESH	48BX782	48BX782	2/5/2016
1	COMPUTER- LAPTOP - REFRESH	57BX782	57BX782	2/5/2016
1	COMPUTER- LAPTOP - REFRESH	59BX782	59BX782	2/5/2016
1	COMPUTER- LAPTOP - REFRESH	5GFY782	5GFY782	2/5/2016
1	COMPUTER- LAPTOP - REFRESH	67BX782	67BX782	2/5/2016
1	COMPUTER- LAPTOP - REFRESH	6CBX782	6CBX782	2/5/2016
1	COMPUTER- LAPTOP - REFRESH	8FBX782	8FBX782	2/5/2016
1	COMPUTER- LAPTOP - REFRESH	9KBX782	9KBX782	2/5/2016
1	COMPUTER- LAPTOP - REFRESH	9PBX782	9PBX782	2/5/2016
1	COMPUTER- LAPTOP - REFRESH	BJFY782	BJFY782	2/5/2016
1	COMPUTER- LAPTOP - REFRESH	CHF782	CHF782	2/5/2016
1	COMPUTER- LAPTOP - REFRESH	DCBX782	DCBX782	2/5/2016
1	COMPUTER- LAPTOP - REFRESH	FDBX782	FDBX782	2/5/2016
1	COMPUTER- LAPTOP - REFRESH	FJFY782	FJFY782	2/5/2016
1	COMPUTER- LAPTOP - REFRESH	FQBX782	FQBX782	2/5/2016
1	COMPUTER- LAPTOP - REFRESH	GHFY782	GHFY782	2/5/2016
1	COMPUTER- LAPTOP - REFRESH	H8BX782	H8BX782	2/5/2016
1	COMPUTER- LAPTOP - REFRESH	HCBX782	HCBX782	2/5/2016
1	COMPUTER- LAPTOP - REFRESH	HFBX782	HFBX782	2/5/2016
1	COMPUTER- LAPTOP - REFRESH	JJFY782	JJFY782	2/5/2016
1	COMPUTER- LAPTOP - REFRESH	JMBX782	JMBX782	2/5/2016
1	COMPUTER- TABLET	1946913	DMPQCGR9FK10	2/22/2016
1	COMPUTER - LAPTOP	1YV8982	1YV8982	2/23/2016
1	COMPUTER - LAPTOP	2B42982	2B42982	2/23/2016
1	COMPUTER - LAPTOP	3C22982	3C22982	2/23/2016

**April 2022 Inventoried Surplus**  
**Picked Up and Verified 03/23/2022 thru 04/26/2022**

**TOTAL ASSETS**

1	COMPUTER - LAPTOP	5C22982	5C22982	2/23/2016
1	COMPUTER - LAPTOP	5F22982	5F22982	2/23/2016
1	COMPUTER - LAPTOP	6B22982	6B22982	2/23/2016
1	COMPUTER - LAPTOP	GB42982	GB42982	2/23/2016
1	COMPUTER - LAPTOP	H922982	H922982	2/23/2016
1	COMPUTER - LAPTOP	HXV8982	HXV8982	2/23/2016
1	COMPUTER- DESKTOP REFRESH	51Y1Z72	51Y1Z72	2/23/2016
1	COMPUTER- DESKTOP REFRESH	51ZZY72	51ZZY72	2/23/2016
1	COMPUTER- DESKTOP REFRESH	5210Z72	5210Z72	2/23/2016
1	COMPUTER- DESKTOP REFRESH	5215Z72	5215Z72	2/23/2016
1	COMPUTER- DESKTOP REFRESH	5234Z72	5234Z72	2/23/2016
1	COMPUTER- DESKTOP REFRESH	5255Z72	5255Z72	2/23/2016
1	COMPUTER- DESKTOP REFRESH	5276Z72	5276Z72	2/23/2016
1	COMPUTER- DESKTOP REFRESH	52BYY72	52BYY72	2/23/2016
1	COMPUTER- DESKTOP REFRESH	52G3Z72	52G3Z72	2/23/2016
1	COMPUTER- DESKTOP REFRESH	52L5Z72	52L5Z72	2/23/2016
1	COMPUTER- DESKTOP REFRESH	52SZY72	52SZY72	2/23/2016
1	COMPUTER- DESKTOP REFRESH	HRZK182	HRZK182	2/23/2016
1	COMPUTER- DESKTOP REFRESH	HS08182	HS08182	2/23/2016
1	COMPUTER- DESKTOP REFRESH	HS0B182	HS0B182	2/23/2016
1	COMPUTER- DESKTOP REFRESH	HS12282	HS12282	2/23/2016
1	COMPUTER- DESKTOP REFRESH	HS28182	HS28182	2/23/2016
1	COMPUTER- DESKTOP REFRESH	HS4D182	HS4D182	2/23/2016
1	COMPUTER- DESKTOP REFRESH	HS4G182	HS4G182	2/23/2016
1	COMPUTER- DESKTOP REFRESH	HS59182	HS59182	2/23/2016
1	COMPUTER- DESKTOP REFRESH	HS5N182	HS5N182	2/23/2016
1	COMPUTER- DESKTOP REFRESH	HS6B182	HS6B182	2/23/2016
1	COMPUTER- DESKTOP REFRESH	HS6D182	HS6D182	2/23/2016
1	COMPUTER- DESKTOP REFRESH	HS78182	HS78182	2/23/2016
1	COMPUTER- DESKTOP REFRESH	HS8K182	HS8K182	2/23/2016
1	COMPUTER- DESKTOP REFRESH	HS98182	HS98182	2/23/2016
1	COMPUTER- DESKTOP REFRESH	HS9C182	HS9C182	2/23/2016
1	COMPUTER- DESKTOP REFRESH	HS9D182	HS9D182	2/23/2016
1	COMPUTER- DESKTOP REFRESH	HS9K182	HS9K182	2/23/2016
1	COMPUTER- DESKTOP REFRESH	HSC8182	HSC8182	2/23/2016
1	COMPUTER - LAPTOP	5GLC982	5GLC982	3/1/2016
1	COMPUTER - LAPTOP	6KLC982	6KLC982	3/1/2016
1	COMPUTER - LAPTOP	7KLC982	7KLC982	3/1/2016
1	COMPUTER - LAPTOP	9GLC982	9GLC982	3/1/2016
1	COMPUTER - LAPTOP	DGLC982	DGLC982	3/1/2016
1	COMPUTER - LAPTOP	GKLC982	GKLC982	3/1/2016
1	COMPUTER - LAPTOP	JHLC982	JHLC982	3/1/2016
1	COMPUTER - LAPTOP	5THM982	5THM982	3/3/2016
1	COMPUTER - LAPTOP	FVHM982	FVHM982	3/3/2016
1	COMPUTER - LAPTOP	9FG3B82	9FG3B82	3/8/2016
1	COMPUTER - LAPTOP	FGG3B82	FGG3B82	3/8/2016
1	COMPUTER - LAPTOP	JFG3B82	JFG3B82	3/8/2016
1	COPIER	1947575	CAAF30482	3/15/2016

**April 2022 Inventoried Surplus**  
**Picked Up and Verified 03/23/2022 thru 04/26/2022**

**TOTAL ASSETS**

1	COPIER	1947576	CAAF30535	3/15/2016
1	COMPUTER - LAPTOP	20P1B82	20P1B82	3/28/2016
1	COMPUTER - LAPTOP	54JFB82	54JFB82	4/12/2016
1	COMPUTER - LAPTOP	55JFB82	55JFB82	4/12/2016
1	COMPUTER- LAPTOP - REFRESH	HGW4C82	HGW4C82	4/12/2016
1	COMPUTER - LAPTOP	3SCRD82	3SCRD82	5/19/2016
1	COMPUTER - LAPTOP	3VCRD82	3VCRD82	5/19/2016
1	COMPUTER - LAPTOP	41DRD82	41DRD82	5/19/2016
1	COMPUTER - LAPTOP	5SCRD82	5SCRD82	5/19/2016
1	COMPUTER - LAPTOP	6XCRD82	6XCRD82	5/19/2016
1	COMPUTER - LAPTOP	7TCRD82	7TCRD82	5/19/2016
1	COMPUTER - LAPTOP	81DRD82	81DRD82	5/19/2016
1	COMPUTER - LAPTOP	CTCRD82	CTCRD82	5/19/2016
1	COMPUTER - LAPTOP	CWCRD82	CWCRD82	5/19/2016
1	COMPUTER - LAPTOP	DRCRD82	DRCRD82	5/19/2016
1	COMPUTER - LAPTOP	DSCRD82	DSCRD82	5/19/2016
1	COMPUTER - LAPTOP	FKHRD82	FKHRD82	5/19/2016
1	COMPUTER - LAPTOP	FWCRD82	FWCRD82	5/19/2016
1	COMPUTER - LAPTOP	GSCRD82	GSCRD82	5/19/2016
1	COMPUTER - LAPTOP	HZCRD82	HZCRD82	5/19/2016
1	COMPUTER - LAPTOP	JPCRD82	JPCRD82	5/19/2016
1	COMPUTER - LAPTOP	JTCRD82	JTCRD82	5/19/2016
1	COMPUTER - LAPTOP	JWCRD82	JWCRD82	5/19/2016
1	COMPUTER - LAPTOP	JXCRD82	JXCRD82	5/19/2016
1	COMPUTER- LAPTOP - REFRESH	1GBYC82	1GBYC82	6/8/2016
1	COMPUTER- LAPTOP - REFRESH	GCBYC82	GCBYC82	6/8/2016
1	TEACHER LAPTOP	CKGNDC2	CKGNDC2	6/14/2016
1	TEACHER LAPTOP	FB5NDC2	FB5NDC2	6/14/2016
1	COMPUTER- LAPTOP - REFRESH	HF3VD82	HF3VD82	6/15/2016
1	COMPUTER - LAPTOP	4R53GC2	4R53GC2	6/16/2016
1	COMPUTER- DESKTOP REFRESH	59ZPDB2	59ZPDB2	6/23/2016
1	COMPUTER- DESKTOP REFRESH	5B3SDB2	5B3SDB2	6/23/2016
1	COMPUTER- DESKTOP REFRESH	5BHRDB2	5BHRDB2	6/23/2016
1	COMPUTER- DESKTOP REFRESH	3WTC8C2	3WTC8C2	6/30/2016
1	COMPUTER- DESKTOP REFRESH	47SC8C2	47SC8C2	6/30/2016
1	COMPUTER- DESKTOP REFRESH	4G9G8C2	4G9G8C2	6/30/2016
1	COMPUTER- DESKTOP REFRESH	4GFL8C2	4GFL8C2	6/30/2016
1	COMPUTER- DESKTOP REFRESH	4H4L8C2	4H4L8C2	6/30/2016
1	COMPUTER- DESKTOP REFRESH	4NLK8C2	4NLK8C2	6/30/2016
1	COMPUTER- DESKTOP REFRESH	4NTC8C2	4NTC8C2	6/30/2016
1	COMPUTER- DESKTOP REFRESH	4NVJ8C2	4NVJ8C2	6/30/2016
1	COMPUTER- DESKTOP REFRESH	4PCC8C2	4PCC8C2	6/30/2016
1	COMPUTER- DESKTOP REFRESH	4PLH8C2	4PLH8C2	6/30/2016
1	COMPUTER- DESKTOP REFRESH	4PMJ8C2	4PMJ8C2	6/30/2016
1	COMPUTER- DESKTOP REFRESH	4PQF8C2	4PQF8C2	6/30/2016
1	COMPUTER- DESKTOP REFRESH	4SSK8C2	4SSK8C2	6/30/2016
1	COMPUTER- DESKTOP REFRESH	7T8TDB2	7T8TDB2	6/30/2016
1	COMPUTER- LAPTOP - REFRESH	2NH4VB2	2NH4VB2	6/30/2016

**April 2022 Inventoried Surplus**  
**Picked Up and Verified 03/23/2022 thru 04/26/2022**

**TOTAL ASSETS**

1	COMPUTER- LAPTOP - REFRESH	4NH4VB2	4NH4VB2	6/30/2016
1	COMPUTER- LAPTOP - REFRESH	5G3VD82	5G3VD82	6/30/2016
1	COMPUTER- LAPTOP - REFRESH	5MH4VB2	5MH4VB2	6/30/2016
1	COMPUTER- LAPTOP - REFRESH	5NH4VB2	5NH4VB2	6/30/2016
1	COMPUTER- LAPTOP - REFRESH	6NH4VB2	6NH4VB2	6/30/2016
1	COMPUTER- LAPTOP - REFRESH	7MH4VB2	7MH4VB2	6/30/2016
1	COMPUTER- LAPTOP - REFRESH	8XR5VB2	8XR5VB2	6/30/2016
1	COMPUTER- LAPTOP - REFRESH	BMH4VB2	BMH4VB2	6/30/2016
1	COMPUTER- LAPTOP - REFRESH	HXR5VB2	HXR5VB2	6/30/2016
1	COPIER	1949239	CGDF13166	6/30/2016
1	COPIER	1949240	CGDF13905	6/30/2016
1	COMPUTER- DESKTOP REFRESH	4S8C8C2	4S8C8C2	7/13/2016
1	COMPUTER- LAPTOP - REFRESH	18T2F82	18T2F82	7/13/2016
1	COMPUTER- LAPTOP - REFRESH	1BT2F82	1BT2F82	7/13/2016
1	COMPUTER- LAPTOP - REFRESH	2TS2F82	2TS2F82	7/13/2016
1	COMPUTER- LAPTOP - REFRESH	2VS2F82	2VS2F82	7/13/2016
1	COMPUTER- LAPTOP - REFRESH	3W91F82	3W91F82	7/13/2016
1	COMPUTER- LAPTOP - REFRESH	5TS2F82	5TS2F82	7/13/2016
1	COMPUTER- LAPTOP - REFRESH	5VS2F82	5VS2F82	7/13/2016
1	COMPUTER- LAPTOP - REFRESH	68T2F82	68T2F82	7/13/2016
1	COMPUTER- LAPTOP - REFRESH	69T2F82	69T2F82	7/13/2016
1	COMPUTER- LAPTOP - REFRESH	6BT2F82	6BT2F82	7/13/2016
1	COMPUTER- LAPTOP - REFRESH	6T91F82	6T91F82	7/13/2016
1	COMPUTER- LAPTOP - REFRESH	6VS2F82	6VS2F82	7/13/2016
1	COMPUTER- LAPTOP - REFRESH	7V91F82	7V91F82	7/13/2016
1	COMPUTER- LAPTOP - REFRESH	7WS2F82	7WS2F82	7/13/2016
1	COMPUTER- LAPTOP - REFRESH	88T2F82	88T2F82	7/13/2016
1	COMPUTER- LAPTOP - REFRESH	8T91F82	8T91F82	7/13/2016
1	COMPUTER- LAPTOP - REFRESH	8TS2F82	8TS2F82	7/13/2016
1	COMPUTER- LAPTOP - REFRESH	8VS2F82	8VS2F82	7/13/2016
1	COMPUTER- LAPTOP - REFRESH	BT91F82	BT91F82	7/13/2016
1	COMPUTER- LAPTOP - REFRESH	BV91F82	BV91F82	7/13/2016
1	COMPUTER- LAPTOP - REFRESH	BVS2F82	BVS2F82	7/13/2016
1	COMPUTER- LAPTOP - REFRESH	C8T2F82	C8T2F82	7/13/2016
1	COMPUTER- LAPTOP - REFRESH	CT91F82	CT91F82	7/13/2016
1	COMPUTER- LAPTOP - REFRESH	CTS2F82	CTS2F82	7/13/2016
1	COMPUTER- LAPTOP - REFRESH	DTS2F82	DTS2F82	7/13/2016
1	COMPUTER- LAPTOP - REFRESH	DVS2F82	DVS2F82	7/13/2016
1	COMPUTER- LAPTOP - REFRESH	F9T2F82	F9T2F82	7/13/2016
1	COMPUTER- LAPTOP - REFRESH	FSS2F82	FSS2F82	7/13/2016
1	COMPUTER- LAPTOP - REFRESH	FTS2F82	FTS2F82	7/13/2016
1	COMPUTER- LAPTOP - REFRESH	HSS2F82	HSS2F82	7/13/2016
1	COMPUTER- LAPTOP - REFRESH	HT91F82	HT91F82	7/13/2016
1	COMPUTER- LAPTOP - REFRESH	HVS2F82	HVS2F82	7/13/2016
1	COMPUTER- LAPTOP - REFRESH	17N8XB2	17N8XB2	8/12/2016
1	COMPUTER- LAPTOP - REFRESH	19N8XB2	19N8XB2	8/12/2016
1	COMPUTER- LAPTOP - REFRESH	36N8XB2	36N8XB2	8/12/2016
1	COMPUTER- LAPTOP - REFRESH	44N8XB2	44N8XB2	8/12/2016

**April 2022 Inventoried Surplus**  
**Picked Up and Verified 03/23/2022 thru 04/26/2022**

**TOTAL ASSETS**

1	COMPUTER- LAPTOP - REFRESH	57N8XB2	57N8XB2	8/12/2016
1	COMPUTER- LAPTOP - REFRESH	5CN8XB2	5CN8XB2	8/12/2016
1	COMPUTER- LAPTOP - REFRESH	61YDXB2	61YDXB2	8/12/2016
1	COMPUTER- LAPTOP - REFRESH	65N8XB2	65N8XB2	8/12/2016
1	COMPUTER- LAPTOP - REFRESH	68N8XB2	68N8XB2	8/12/2016
1	COMPUTER- LAPTOP - REFRESH	6BN8XB2	6BN8XB2	8/12/2016
1	COMPUTER- LAPTOP - REFRESH	6CN8XB2	6CN8XB2	8/12/2016
1	COMPUTER- LAPTOP - REFRESH	85N8XB2	85N8XB2	8/12/2016
1	COMPUTER- LAPTOP - REFRESH	8BN8XB2	8BN8XB2	8/12/2016
1	COMPUTER- LAPTOP - REFRESH	92N8XB2	92N8XB2	8/12/2016
1	COMPUTER- LAPTOP - REFRESH	94N8XB2	94N8XB2	8/12/2016
1	COMPUTER- LAPTOP - REFRESH	B9N8XB2	B9N8XB2	8/12/2016
1	COMPUTER- LAPTOP - REFRESH	BBN8XB2	BBN8XB2	8/12/2016
1	COMPUTER- LAPTOP - REFRESH	C9N8XB2	C9N8XB2	8/12/2016
1	COMPUTER- LAPTOP - REFRESH	D4N8XB2	D4N8XB2	8/12/2016
1	COMPUTER- LAPTOP - REFRESH	D7N8XB2	D7N8XB2	8/12/2016
1	COMPUTER- LAPTOP - REFRESH	D8N8XB2	D8N8XB2	8/12/2016
1	COMPUTER- LAPTOP - REFRESH	F2N8XB2	F2N8XB2	8/12/2016
1	COMPUTER- LAPTOP - REFRESH	F3N8XB2	F3N8XB2	8/12/2016
1	COMPUTER- LAPTOP - REFRESH	G3N8XB2	G3N8XB2	8/12/2016
1	COMPUTER- LAPTOP - REFRESH	H4N8XB2	H4N8XB2	8/12/2016
1	COMPUTER- LAPTOP - REFRESH	H7N8XB2	H7N8XB2	8/12/2016
1	COMPUTER- LAPTOP - REFRESH	2RKKXB2	2RKKXB2	8/16/2016
1	COMPUTER- TABLET	1949881	F9FS2LBMFCM6	8/22/2016
1	COMPUTER- TABLET	1949891	F9FS2L2UFCM6	8/22/2016
1	COMPUTER- TABLET	1949898	F9FS246TFCM6	8/22/2016
1	COMPUTER- TABLET	1949905	F9FS28K4FCM6	8/22/2016
1	COMPUTER- TABLET	1949906	F9FS268NFCM6	8/22/2016
1	COMPUTER- TABLET	1949915	F9FS28SZFCM6	8/22/2016
1	COMPUTER- TABLET	1949938	F9FS28KXFCM6	8/22/2016
1	COMPUTER- TABLET	1949957	F9FRX05RFCM6	8/22/2016
1	COMPUTER- LAPTOP - REFRESH	5P9PZB2	5P9PZB2	8/29/2016
1	COMPUTER - LAPTOP	2KMHZB2	2KMHZB2	9/9/2016
1	COMPUTER - LAPTOP	2LMHZB2	2LMHZB2	9/9/2016
1	COMPUTER - LAPTOP	4KMHZB2	4KMHZB2	9/9/2016
1	COMPUTER - LAPTOP	7KMHZB2	7KMHZB2	9/9/2016
1	COMPUTER - LAPTOP	7LMHZB2	7LMHZB2	9/9/2016
1	COMPUTER - LAPTOP	8KMHZB2	8KMHZB2	9/9/2016
1	COMPUTER - LAPTOP	8LMHZB2	8LMHZB2	9/9/2016
1	COMPUTER - LAPTOP	DKMHZB2	DKMHZB2	9/9/2016
1	COMPUTER - LAPTOP	DLMHZB2	DLMHZB2	9/9/2016
1	COMPUTER - LAPTOP	GKMHZB2	GKMHZB2	9/9/2016
1	COMPUTER - LAPTOP	HJMHZB2	HJMHZB2	9/9/2016
1	COMPUTER- LAPTOP - REFRESH	2GB70C2	2GB70C2	9/12/2016
1	COPIER	1950722	CIHF11196	9/26/2016
1	COMPUTER- LAPTOP - REFRESH	FLSS1C2	FLSS1C2	9/27/2016
1	STUDENT RESPONSE SYSTEM	1951208		11/8/2016
1	COMPUTER- LAPTOP - REFRESH	4DF13C2	4DF13C2	11/15/2016



**April 2022 Inventoried Surplus**  
**Picked Up and Verified 03/23/2022 thru 04/26/2022**

**TOTAL ASSETS**

1	COMPUTER- LAPTOP - REFRESH	4XD13C2	4XD13C2	11/15/2016
1	COMPUTER- LAPTOP - REFRESH	7CF13C2	7CF13C2	11/15/2016
1	COMPUTER- LAPTOP - REFRESH	9XD13C2	9XD13C2	11/15/2016
1	COMPUTER- LAPTOP - REFRESH	BCF13C2	BCF13C2	11/15/2016
1	COMPUTER- LAPTOP - REFRESH	DCF13C2	DCF13C2	11/15/2016
1	COMPUTER- LAPTOP - REFRESH	FCF13C2	FCF13C2	11/15/2016
1	COMPUTER- LAPTOP - REFRESH	JCF13C2	JCF13C2	11/15/2016
1	COMPUTER- TABLET	1951002	F9FSLRTQFCM6	12/5/2016
1	COMPUTER- LAPTOP - REFRESH	6C5X4C2	6C5X4C2	12/6/2016
1	COMPUTER- LAPTOP - REFRESH	GM4X4C2	GM4X4C2	12/6/2016
1	COMPUTER- LAPTOP - REFRESH	JM4X4C2	JM4X4C2	12/6/2016
1	COMPUTER- TABLET	1951648	DMPS47EKH1MJ	1/4/2017
1	COMPUTER- TABLET	1951654	DMPS46ASH1MJ	1/4/2017
1	COMPUTER- TABLET	1951593	DMPSHJUBG5W1	1/5/2017
1	COMPUTER- TABLET	1951844	DMPT48EWG5W1	2/2/2017
1	COMPUTER- TABLET	1951849	DMPT48BPG5W1	2/2/2017
1	COMPUTER - LAPTOP	HL7YXD2	HL7YXD2	2/14/2017
1	COMPUTER- DESKTOP REFRESH	HWGWMD2	HWGWMD2	2/14/2017
1	STUDENT RESPONSE SYSTEM	1954462		2/27/2017
1	STUDENT RESPONSE SYSTEM	1954465		2/27/2017
1	COMPUTER- LAPTOP - REFRESH	53FF1F2	53FF1F2	3/8/2017
1	COMPUTER- LAPTOP - REFRESH	B5FF1F2	B5FF1F2	3/8/2017
1	COMPUTER- LAPTOP - REFRESH	2Z8X1F2	2Z8X1F2	3/20/2017
1	COMPUTER-TEACHER LAPTOP	JQSN1G2	JQSN1G2	4/25/2017
1	COMPUTER - LAPTOP	873X5F2	873X5F2	5/24/2017
1	COMPUTER - LAPTOP	FC1X5F2	FC1X5F2	5/24/2017
1	COMPUTER- LAPTOP REFRESH	1LZJ5F2	1LZJ5F2	6/5/2017
1	COMPUTER- LAPTOP REFRESH	4GZJ5F2	4GZJ5F2	6/5/2017
1	COMPUTER- LAPTOP REFRESH	7FZJ5F2	7FZJ5F2	6/5/2017
1	COMPUTER- LAPTOP REFRESH	8MZJ5F2	8MZJ5F2	6/5/2017
1	COMPUTER- LAPTOP REFRESH	JRZJ5F2	JRZJ5F2	6/5/2017
1	COMPUTER- LAPTOP REFRESH	3N7H5F2	3N7H5F2	6/13/2017
1	COMPUTER- LAPTOP REFRESH	C6DY2H2	C6DY2H2	6/19/2017
1	COMPUTER- TABLET	1955467	GCTV434GHLFD	9/5/2017
1	COMPUTER- TABLET	1955483	GCTV42HMHLFD	9/5/2017
1	COMPUTER- LAPTOP REFRESH	68C9PJ2	68C9PJ2	9/19/2017
1	COMPUTER- LAPTOP REFRESH	DH2KQJ2	DH2KQJ2	10/16/2017
1	COMPUTER- DESKTOP REFRESH	6MNBXK2	6MNBXK2	11/6/2017
1	COMPUTER- TABLET	1958060	GCTV71F0HLFD	11/7/2017
1	COMPUTER- TABLET	1958412	GCTVWC9MHLFD	1/12/2018
1	COMPUTER- TABLET	1958433	GCTVWB0DHFLFD	1/12/2018
1	COMPUTER- TABLET	1958448	GCTVWB2CHLFD	1/12/2018
1	COMPUTER- TABLET	1958455	GCTVRPHEHLFD	1/12/2018
1	COMPUTER- TABLET	1958456	GCTVRGNWHLFD	1/12/2018
1	COMPUTER- TABLET	1958476	GCTVWBEEHLFD	1/12/2018
1	COMPUTER - LAPTOP	2B473L2	2B473L2	2/5/2018
1	COMPUTER - LAPTOP	3B473L2	3B473L2	2/5/2018
1	COMPUTER - LAPTOP	4B473L2	4B473L2	2/5/2018

**April 2022 Inventoried Surplus**  
**Picked Up and Verified 03/23/2022 thru 04/26/2022**

**TOTAL ASSETS**

1	COMPUTER - LAPTOP	59473L2	59473L2	2/5/2018
1	COMPUTER - LAPTOP	5B473L2	5B473L2	2/5/2018
1	COMPUTER - LAPTOP	68473L2	68473L2	2/5/2018
1	COMPUTER - LAPTOP	98473L2	98473L2	2/5/2018
1	COMPUTER - LAPTOP	B7473L2	B7473L2	2/5/2018
1	COMPUTER - LAPTOP	C8473L2	C8473L2	2/5/2018
1	COMPUTER - LAPTOP	CB473L2	CB473L2	2/5/2018
1	COMPUTER - LAPTOP	D8473L2	D8473L2	2/5/2018
1	COMPUTER - LAPTOP	F9473L2	F9473L2	2/5/2018
1	COMPUTER - LAPTOP	HM473L2	HM473L2	2/5/2018
1	COMPUTER - LAPTOP	JM473L2	JM473L2	2/5/2018
1	COMPUTER- TABLET	1958352	F9FVD7ZBGHKJ	2/20/2018
1	COMPUTER - LAPTOP	8HLT4L2	8HLT4L2	3/12/2018
1	COMPUTER - LAPTOP	3LPV4L2	3LPV4L2	3/20/2018
1	COMPUTER- DESKTOP	1960737		5/2/2018
1	COMPUTER- LAPTOP REFRESH	48DGBL2	48DGBL2	6/18/2018
1	COMPUTER- LAPTOP REFRESH	CYDGBL2	CYDGBL2	6/18/2018
1	COMPUTER- LAPTOP REFRESH	HSC5BL2	HSC5BL2	7/24/2018
1	COMPUTER - LAPTOP	72MNCL2	72MNCL2	7/30/2018
1	COMPUTER- TABLET	1962910	DMQXC6KXJF8J	9/19/2018
1	COMPUTER- TABLET	1962968	DMQX363HJF8J	9/19/2018
1	COMPUTER - LAPTOP	1964347	BRW9NQ2	1/31/2019
1	COMPUTER - LAPTOP	5H3B6P2	5H3B6P2	3/12/2019
1	COMPUTER - LAPTOP	6K3B6P2	6K3B6P2	3/12/2019
1	COMPUTER- TABLET	1967338	GQ8YKWPVJF8J	5/6/2019
1	COMPUTER- TABLET	1967348	GQ8YKSJTJF8J	5/6/2019
1	COMPUTER- TABLET	1967352	GQ8YKEH5JF8J	5/6/2019
1	COMPUTER - LAPTOP	1967497	FV FYL72LJK78	5/22/2019
1	COMPUTER- TEACHER LAPTOP - REFRESH	1GZBPV2	1GZBPV2	6/10/2019
1	COMPUTER- TEACHER LAPTOP - REFRESH	38D2PV2	38D2PV2	6/10/2019
1	COMPUTER- TEACHER LAPTOP - REFRESH	DHVTMV2	DHVTMV2	6/10/2019
1	COMPUTER- TEACHER LAPTOP - REFRESH	H466PV2	H466PV2	6/10/2019
1	COMPUTER - LAPTOP	FRFY7Y2	FRFY7Y2	9/5/2019
1	COMPUTER - LAPTOP	11DRD82	11DRD82	2/11/2020
1	COMPUTER - LAPTOP	DJ3MMW2	DJ3MMW2	5/20/2020
1	COMPUTER - LAPTOP	1973515	PF297J2L	8/25/2020
1	COMPUTER - LAPTOP	1976730	5CD016BZ3P	8/27/2020
1	COMPUTER - LAPTOP	1977020	5CD016BYYL	8/27/2020
1	COMPUTER - LAPTOP	1977142	5CD016BZLM	8/27/2020
1	COMPUTER - LAPTOP	1977143	5CD016BXFB	8/27/2020
1	COMPUTER - LAPTOP	1977150	5CD016BXG1	8/27/2020
1	COMPUTER - LAPTOP	1977213	5CD016BXBC	8/27/2020
1	COMPUTER - LAPTOP	1977245	5CD016BYW3	8/27/2020
1	COMPUTER - LAPTOP	1977246	5CD016BXBN	8/27/2020
1	COMPUTER - LAPTOP	1977252	5CD0162QZF	8/27/2020
1	COMPUTER - LAPTOP	1977256	5CD0162QZC	8/27/2020
1	COMPUTER - LAPTOP	1977264	5CD016BXBZ	8/27/2020
1	COMPUTER - LAPTOP	1977271	5CD016BXVG	8/27/2020

**April 2022 Inventoried Surplus  
Picked Up and Verified 03/23/2022 thru 04/26/2022**

**TOTAL ASSETS**

1	COMPUTER - LAPTOP	1977272	5CD016BXKV	8/27/2020
1	COMPUTER - LAPTOP	1977278	5CD016BXG7	8/27/2020
1	COMPUTER - LAPTOP	1977295	5CD01681TZ	8/27/2020
1	COMPUTER - LAPTOP	1977305	5CD016BYN0	8/27/2020
1	COMPUTER - LAPTOP	1977307	5CD0162PZF	8/27/2020
1	COMPUTER - LAPTOP	1977308	5CD0165C8R	8/27/2020
1	COMPUTER - LAPTOP	1977327	5CD0165FL3	8/27/2020
1	COMPUTER - LAPTOP	1977339	5CD016C0WN	8/27/2020
1	COMPUTER - LAPTOP	1977341	5CD016BZGM	8/27/2020
1	COMPUTER - LAPTOP	1977347	5CD016BZNC	8/27/2020
1	COMPUTER - LAPTOP	1973518	2HA99FEN543647H	8/31/2020
1	COMPUTER - LAPTOP	1978563	3VVK9FCN903272	10/1/2020
1	COMPUTER - LAPTOP	1978983	3VVK9FDN902752	10/1/2020
1	COMPUTER- LAPTOP - REFRESH	1GYB7C3	1GYB7C3	6/30/2021
1	COMPUTER- LAPTOP - REFRESH	2DRD7C3	2DRD7C3	6/30/2021
1	COMPUTER- LAPTOP - REFRESH	3GSV7C3	3GSV7C3	6/30/2021
1	COMPUTER- LAPTOP - REFRESH	42LD8C3	42LD8C3	6/30/2021
1	COMPUTER- LAPTOP - REFRESH	4HL68C3	4HL68C3	6/30/2021
1	COMPUTER- LAPTOP - REFRESH	61YT7C3	61YT7C3	6/30/2021
1	COMPUTER- LAPTOP - REFRESH	6X31BC3	6X31BC3	6/30/2021
1	COMPUTER- LAPTOP - REFRESH	CPJV593	CPJV593	6/30/2021
1	COMPUTER- LAPTOP - REFRESH	GL3G8C3	GL3G8C3	6/30/2021
1	COMPUTER- LAPTOP - REFRESH	H95G8C3	H95G8C3	6/30/2021
1	COMPUTER- LAPTOP - REFRESH	J2LR7C3	J2LR7C3	6/30/2021
1	COMPUTER - LAPTOP	66K09C3	66K09C3	10/29/2021
1	COMPUTER - LAPTOP	GVKQ8C3	GVKQ8C3	11/30/2021
	<b>TOTAL TECHNOLOGY - 1128</b>			

**PORTABLES**

QTY	CLASS/DESCRIPTION	PROPERTY TAG	SERIAL NUMBER	PURCHASE DATE
1	9980-MOBILE CLASSROOMS	9085165		12/01/85
	<b>TOTAL PORTABLES - 1</b>			

## FY 2022 YTD Surplus Sales Revenue

Date	Item GOVDEALS.COM	Gross Sales Price	Actual Revenue
7/26/2021	PASS THRU FRIDGE	\$ 31.98	\$ 25.00
8/19/2021	MIXER	\$ 3,250.00	\$ 3,168.75
8/19/2021	STEAMER	\$ 430.00	\$ 419.25
8/19/2021	FOOD DISPLAY	\$ 102.00	\$ 97.00
8/19/2021	REFRIGERATOR	\$ 125.00	\$ 120.00
8/19/2021	FOOD COUNTER	\$ 102.00	\$ 97.00
8/25/2021	REFRIGERATOR	\$ 53.30	\$ 45.00
11/3/2021	PORTABLE (OSBORNE CAMPUS)	\$ 1,599.00	\$ 1,462.50
11/23/2021	COPIERS	\$ 2,325.00	\$ 2,266.88
11/23/2021	COPIERS	\$ 2,304.00	\$ 2,246.40
11/23/2021	COPIERS	\$ 2,525.00	\$ 2,461.88
11/29/2021	PORTABLE (FAIR OAKS ES)	\$ 2,318.55	\$ 2,120.63
11/29/2021	PORTABLES (BROWN CAMPUS)	\$ 9,866.90	\$ 9,024.60
11/29/2021	PORTABLES (NORTON PARK ES)	\$ 6,775.50	\$ 6,197.10
12/14/2021	ICE MAKERS	\$ 1,945.45	\$ 1,779.38
12/14/2021	KITCHEN ACCESSORIES	\$ 1,305.85	\$ 1,194.38
12/14/2021	CASHIER'S STAND	\$ 26.65	\$ 20.00
12/14/2021	BUFFALO CHOPPERS	\$ 2,425.15	\$ 2,218.13
1/4/2022	PORTABLE (CLAY ES)	\$ 2,218.35	\$ 2,028.98
1/4/2022	PORTABLES (SCELC)	\$ 8,266.83	\$ 7,561.13
1/4/2022	SCIENCE TABLES	\$ 53.30	\$ 45.00
1/4/2022	SCIENCE TABLES	\$ 53.30	\$ 45.00
1/4/2022	CAN RACKS	\$ 44.77	\$ 37.00
1/4/2022	FREEZER	\$ 310.00	\$ 302.25
1/4/2022	FREEZER	\$ 831.48	\$ 760.50
1/4/2022	FOOD COUNTER	\$ 67.00	\$ 62.00
1/4/2022	MICROWAVE	\$ 87.41	\$ 77.00
1/18/2022	COPIERS	\$ 5,300.00	\$ 5,167.50
1/18/2022	COPIERS	\$ 3,800.00	\$ 3,705.00
1/28/2022	MILK COOLERS	\$ 149.24	\$ 135.00
2/22/2022	REFRIGERATOR PARTS	\$ 82.08	\$ 72.00
3/23/2022	ICE MAKER	\$ 220.00	\$ 214.50
3/23/2022	PREP TABLES	\$ 405.00	\$ 394.88
3/23/2022	OVENS	\$ 825.00	\$ 804.38
3/23/2022	FOOD COUNTERS	\$ 1,125.25	\$ 1,097.12
3/23/2022	COPIERS	\$ 3,425.00	\$ 3,339.38
3/23/2022	COPIERS	\$ 2,625.00	\$ 2,559.38
3/23/2022	COPIERS	\$ 4,550.00	\$ 4,436.25
3/23/2022	PALLET JACK	\$ 250.51	\$ 229.13
3/23/2022	CUSTODIAL EQUIPMENT	\$ 889.04	\$ 813.15
4/12/2022	FREEZER & HOT FOOD	\$ 277.16	\$ 253.50
4/12/2022	HOLDING & PROOFING CABINETS	\$ 241.98	\$ 221.33
4/12/2022	TRAY CADDYS	\$ 53.30	\$ 45.00
4/12/2022	TENNANTS	\$ 854.93	\$ 781.95
4/12/2022	CUSTODIAL EQUIPMENT	\$ 149.24	\$ 135.00
4/12/2022	LARGE PRINTERS	\$ 426.40	\$ 390.00

## FY 2022 YTD Surplus Sales Revenue

Date	Item GOVDEALS.COM	Gross Sales Price	Actual Revenue
4/12/2022	SPEAKERS	\$ 2,478.45	\$ 2,266.88
4/12/2022	SCREEN PRINT MACHINES	\$ 213.20	\$ 195.00
4/20/2022	MILK COOLERS	\$ 180.00	\$ 175.00
<b>Subtotal Online Sales</b>		<b>\$ 77,964.55</b>	<b>\$ 73,314.07</b>
<b>Auction/Misc</b>			
7/15/2021	SA RECYCLING	\$ 574.56	\$ 574.56
7/15/2021	DEB HILL HGTV	\$ 80.00	\$ 80.00
7/15/2021	PREMIER	\$ 1,028.00	\$ 1,028.00
7/15/2021	SA RECYCLING	\$ 327.24	\$ 327.24
7/15/2021	CW AUSTIN	\$ 77.90	\$ 77.90
7/15/2021	BRANDON LEDBETTER	\$ 75.00	\$ 75.00
7/26/2021	SA RECYCLING (FLEET)	\$ 511.20	\$ 511.20
7/26/2021	SA RECYCLING	\$ 332.91	\$ 332.91
7/26/2021	COPART	\$ 1,086.00	\$ 1,086.00
7/26/2021	COPART	\$ 8,077.00	\$ 8,077.00
7/26/2021	COPART	\$ 6,330.00	\$ 6,330.00
8/19/2021	SA RECYCLING	\$ 1,255.50	\$ 1,255.50
8/19/2021	SA RECYCLING	\$ 367.95	\$ 367.95
8/19/2021	COPART	\$ 136.00	\$ 136.00
8/19/2021	CW AUSTIN	\$ 215.74	\$ 215.74
8/19/2021	MILLENNIUM PALLETS	\$ 286.00	\$ 286.00
8/25/2021	KEVIN LONG	\$ 10.00	\$ 10.00
8/25/2021	SA RECYCLING	\$ 435.20	\$ 435.20
8/25/2021	SA RECYCLING	\$ 1,798.60	\$ 1,798.60
9/8/2021	SA RECYCLING	\$ 221.80	\$ 221.80
9/8/2021	PREMIER	\$ 5,538.70	\$ 5,538.70
9/8/2021	CHLOE MOBLEY	\$ 60.00	\$ 60.00
9/8/2021	CURTIS EVANS	\$ 50.00	\$ 50.00
9/23/2021	SA RECYCLING	\$ 1,105.10	\$ 1,105.10
9/23/2021	SA RECYCLING	\$ 309.60	\$ 309.60
9/23/2021	CW AUSTIN	\$ 51.40	\$ 51.40
9/24/2021	SA RECYCLING (FLEET)	\$ 1,144.20	\$ 1,144.20
9/24/2021	SA RECYCLING (FLEET)	\$ 772.20	\$ 772.20
9/24/2021	SA RECYCLING (FLEET)	\$ 1,602.00	\$ 1,602.00
9/24/2021	SA RECYCLING (FLEET)	\$ 3,225.60	\$ 3,225.60
9/24/2021	SA RECYCLING (FLEET)	\$ 380.40	\$ 380.40
10/4/2021	CW AUSTIN	\$ 37.90	\$ 37.90
10/4/2021	SA RECYCLING	\$ 212.00	\$ 212.00
10/4/2021	SA RECYCLING	\$ 375.20	\$ 375.20
10/4/2021	SA RECYCLING	\$ 518.40	\$ 518.40
10/4/2021	PREMIER	\$ 3,366.00	\$ 3,366.00
10/4/2021	ORANGE CONE PRODUCTIONS	\$ 910.00	\$ 910.00
10/12/2021	CYNTHIA FLEMING	\$ 70.00	\$ 70.00
10/12/2021	DONNA WALLIS	\$ 70.00	\$ 70.00
10/18/2021	LYNDA ENTSMINGER	\$ 35.00	\$ 35.00
10/18/2021	ARCH CONSTRUCTION SERVICES	\$ 600.00	\$ 600.00

## FY 2022 YTD Surplus Sales Revenue

Date	Item GOVDEALS.COM	Gross Sales Price	Actual Revenue
10/18/2021	KATHLEEN LOVETT	\$ 60.00	\$ 60.00
10/19/2021	SA RECYCLING	\$ 292.00	\$ 292.00
10/19/2021	SA RECYCLING	\$ 183.20	\$ 183.20
10/26/2021	SA RECYCLING (FLEET)	\$ 1,547.40	\$ 1,547.40
10/26/2021	SA RECYCLING (FLEET)	\$ 1,890.00	\$ 1,890.00
10/26/2021	SA RECYCLING (FLEET)	\$ 3,153.00	\$ 3,153.00
10/26/2021	SA RECYCLING (FLEET)	\$ 585.00	\$ 585.00
10/26/2021	SA RECYCLING	\$ 367.20	\$ 367.20
10/26/2021	STEPHEN COCHRAN	\$ 25.00	\$ 25.00
11/10/2021	SA RECYCLING	\$ 768.00	\$ 768.00
11/10/2021	SA RECYCLING	\$ 789.60	\$ 789.60
11/10/2021	SA RECYCLING	\$ 268.80	\$ 268.80
11/10/2021	CW AUSTIN	\$ 34.42	\$ 34.42
11/11/2021	SA RECYCLING	\$ 1,822.60	\$ 1,822.60
11/11/2021	PREMIER	\$ 2,277.50	\$ 2,277.50
11/23/2021	SA RECYCLING	\$ 1,326.40	\$ 1,326.40
11/23/2021	RATTANA INTHIRATHVONGSY	\$ 20.00	\$ 20.00
12/6/2021	STEPHEN COCHRAN	\$ 60.00	\$ 60.00
12/6/2021	SA RECYCLING (FLEET)	\$ 4,565.60	\$ 4,565.60
12/6/2021	SA RECYCLING (FLEET)	\$ 2,272.00	\$ 2,272.00
12/13/2021	PREMIER	\$ 10,326.55	\$ 10,326.55
12/13/2021	PREMIER	\$ 1,067.00	\$ 1,067.00
12/13/2021	PREMIER	\$ 3,411.10	\$ 3,411.10
12/13/2021	PREMIER	\$ 824.00	\$ 824.00
12/13/2021	CW AUSTIN	\$ 56.74	\$ 56.74
1/4/2022	SA RECYCLING	\$ 318.60	\$ 318.60
1/4/2022	SA RECYCLING	\$ 174.00	\$ 174.00
1/4/2022	SA RECYCLING	\$ 320.40	\$ 320.40
1/4/2022	SA RECYCLING	\$ 1,043.40	\$ 1,043.40
1/4/2022	PREMIER	\$ 5,236.80	\$ 5,236.80
1/4/2022	PREMIER	\$ 2,954.05	\$ 2,954.05
1/18/2022	SA RECYCLING	\$ 938.10	\$ 938.10
1/19/2022	SA RECYCLING	\$ 34.60	\$ 34.60
1/28/2022	SA RECYCLING	\$ 149.80	\$ 149.80
1/28/2022	MILLENNIUM PALLETS	\$ 500.00	\$ 500.00
2/15/2022	SA RECYCLING	\$ 355.20	\$ 355.20
2/15/2022	STEPHEN COCHRAN	\$ 5.00	\$ 5.00
2/15/2022	PREMIER	\$ 5,175.30	\$ 5,175.30
2/15/2022	SA RECYCLING	\$ 200.00	\$ 200.00
2/15/2022	CW AUSTIN	\$ 39.35	\$ 39.35
2/15/2022	TANYA WEBB SET DECORATION	\$ 1,611.00	\$ 1,611.00
2/2/2022	SA RECYCLING	\$ 82.60	\$ 82.60
3/8/2022	SA RECYCLING	\$ 189.60	\$ 189.60
3/8/2022	SA RECYCLING	\$ 38.60	\$ 38.60
3/8/2022	CW AUSTIN	\$ 130.05	\$ 130.05
3/16/2022	SA RECYCLING	\$ 200.80	\$ 200.80

## FY 2022 YTD Surplus Sales Revenue

Date	Item GOVDEALS.COM	Gross Sales Price	Actual Revenue
3/16/2022	SA RECYCLING	\$ 351.20	\$ 351.20
3/18/2022	SA RECYCLING	\$ 116.00	\$ 116.00
3/18/2022	SA RECYCLING	\$ 1,237.10	\$ 1,237.10
3/21/2022	BRIAN FRIEDMAN FASCO PALLET	\$ 596.00	\$ 596.00
3/23/2022	PREMIER	\$ 7,433.00	\$ 7,433.00
3/28/2022	BALFOUR BEATTY	\$ 1,200.00	\$ 1,200.00
4/12/2022	LEGACIES S4	\$ 80.00	\$ 80.00
4/12/2022	SA RECYCLING	\$ 1,217.00	\$ 1,217.00
4/12/2022	PREMIER	\$ 9,899.15	\$ 9,899.15
4/20/2022	COPART	\$ 1,186.00	\$ 1,186.00
4/25/2022	PREMIER	\$ 440.50	\$ 440.50
<b>Total All Surplus Sales</b>		<b>\$ 203,071.16</b>	<b>\$ 198,420.68</b>

**Surplus Furniture and Equipment for Auction or Disposal  
as of 04/26/2022**

#	Description	Qty	Unit	Explanation
1	Misc Furniture	950	ea	Damaged/Obsolete - reviewed by Warehouse Staff
2	Non-Inventoried Misc Equipment	40	pallets	Damaged/Obsolete - reviewed by Warehouse Staff
3	Non-Inventoried FNS Equipment	45	pallets	Damaged/Obsolete - reviewed by FNS
4	Inventoried Technology**	1,128	ea	Damaged/Obsolete - reviewed by Technology Dept
5	Inventoried Maintenance**	0	ea	Damaged/Obsolete - reviewed by Maintenance
6	Inventoried Athletics	3	ea	Damaged/Obsolete - reviewed by Athletics
7	Inventoried Food and Nutrition**	0	ea	Damaged/Obsolete - reviewed by FNS
8	Textbooks/Media Center Books	150	pallets	Off Adoption/Obsolete - reviewed by T&L
9	Misc Instructional Tech	0	ea	Damaged/Obsolete - reviewed by Technology Dept
10	Transportation/Fleet	0	ea	Damaged/Obsolete - reviewed by Fleet Maintenance
11	Portables	1	ea	Damaged/Obsolete - Reviewed by SPLOST

\*\* Detail on file in the Superintendent's office



**COBB COUNTY BOARD OF EDUCATION  
AGENDA ITEM  
May 19, 2022**

**TOPIC:**

**AGENDA ITEM #2** – Recommendation for Approval of a Permanent Utility Easement with Georgia Power for the New Gymnasium at Sprayberry High School

**BACKGROUND/RATIONALE:**

Georgia Power is requesting a permanent utility easement to authorize the relocation of their transformer and power poles. This permanent easement would be 580 linear feet and 10 feet in width, for an approximate total of 5,800 square feet. This utility easement is necessary to provide power to the new gymnasium.

**SUPERINTENDENT’S RECOMMENDATION:**

Approve the recommendation for the utility easement with Georgia Power for the new gymnasium at Sprayberry High School.

**COST:**

None

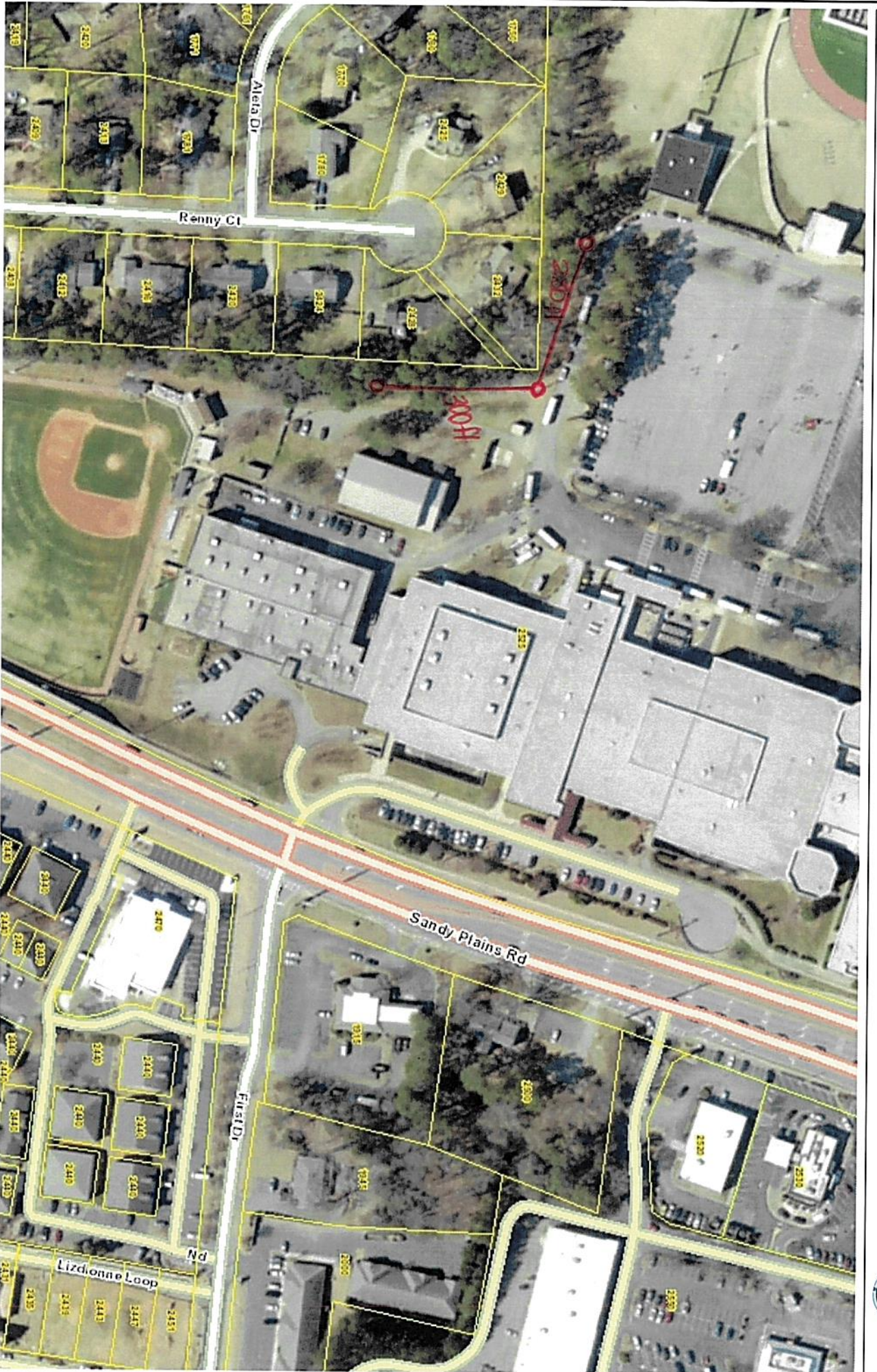
**DATA SOURCES:**

Marc Smith  
Nick Parker  
Board Attorney





# Cobb County Georgia Online Mapping



WGS\_1984\_Web\_Mercator\_Auxiliary\_Sphere  
 © Cobb County Georgia

This map is a user generated static output from an Internet mapping site and is for reference only. Data layers that appear on this map may or may not be accurate, current, or otherwise reliable.  
**THIS MAP IS NOT TO BE USED FOR NAVIGATION**

1:2,400



Map Notes:



**COBB COUNTY BOARD OF EDUCATION  
AGENDA ITEM  
May 19, 2022**

**TOPIC:**

**AGENDA ITEM #3** – Recommendation to Phase in Building 5040 at Walton High School

**BACKGROUND/RATIONALE:**

In accordance with the approved SPLOST V Program, Walton High School was scheduled to receive a Robotics Facility. Building 5040 previously phased out to be demolished was preserved and converted to the new Robotics Facility. The Georgia Department of Education requires a resolution by the local Board of Education that phases back in the facility. Approval of this resolution will allow CCSD to comply with the Georgia Department of Education requirements.

**SUPERINTENDENT'S RECOMMENDATION:**

Approve the Resolution to phase in building 5040 and have the document executed by the Superintendent and the Board Chair and submit to the Georgia Department of Education.

**COST:**

N/A

**DATA SOURCES:**

Marc Smith

Nick Parker

Board Attorney

**COBB COUNTY BOARD OF EDUCATION  
AGENDA ITEM  
May 19, 2022**

**TOPIC:**

**AGENDA ITEM #4** – Recommendation for Approval of Architect Appointment for the Wheeler High School Renovations

**BACKGROUND/RATIONALE:**

In accordance with Cobb County School District Administrative Rule FEAB-R and Fee Schedule FEAB-1 for Architectural and Engineering Services, the appointment of an architect for the following project is necessary at this time in order to allow design work to begin.

Wheeler High School Renovations  
Gardner Spencer Smith Tench & Jarbeau, Atlanta, GA 30303

**SUPERINTENDENT'S RECOMMENDATION:**

Approve the appointment of the architect for Wheeler High School Renovations and authorize the Superintendent to execute the contract.

**COST:**

The cost of design fees will be in accordance with Cobb County School District Administrative Rule FEAB-R and Fee Schedule FEAB-1 for Architectural and Engineering Services. These fees based on the published fee schedules will be 5% of the actual cost of the project.

<b>FACILITY</b>	<b>BUDGET *</b>	<b>CHARGE CODE</b>
Wheeler HS Renovations	\$309,116.95	ES5B014WHEH-245ARCH

\* 5% of Estimated Construction Estimate

Budgeted: SPLOST V.

**DATA SOURCES:**

Marc Smith  
Nick Parker

**COBB COUNTY BOARD OF EDUCATION**  
**AGENDA ITEM**  
**May 19, 2022**

**TOPIC:**

**AGENDA ITEM #5** – Recommendation for Adoption of the FY2023 Budget

**BACKGROUND/RATIONALE:**

*FY2023 Budget*

Administration has conducted work sessions and meetings to review the budget with the public and the Board. The Board tentatively approved the FY2023 budget on April 21, 2022. Two public forums were held on April 21, 2022, at 6:30 PM and on May 19, 2022, at 6:30 PM for public input on the FY2023 budget. The budget submitted is summarized below:

	General Fund	Other Funds	All Funds
<b>FY2023</b>			
<b>Tentative Budget</b>			
Revenue	\$ 1,303,409,442	\$ 140,731,669	\$ 1,444,141,111
Expenditures	\$ 1,333,260,529	\$ 144,257,549	\$ 1,477,518,078

**SUPERINTENDENT’S RECOMMENDATION:**

Approve the FY2023 budget.

**COST:**

As included in the budget.

**DATA SOURCES:**

Chris Ragsdale  
Brad Johnson  
Mandy Wissing  
David Baker