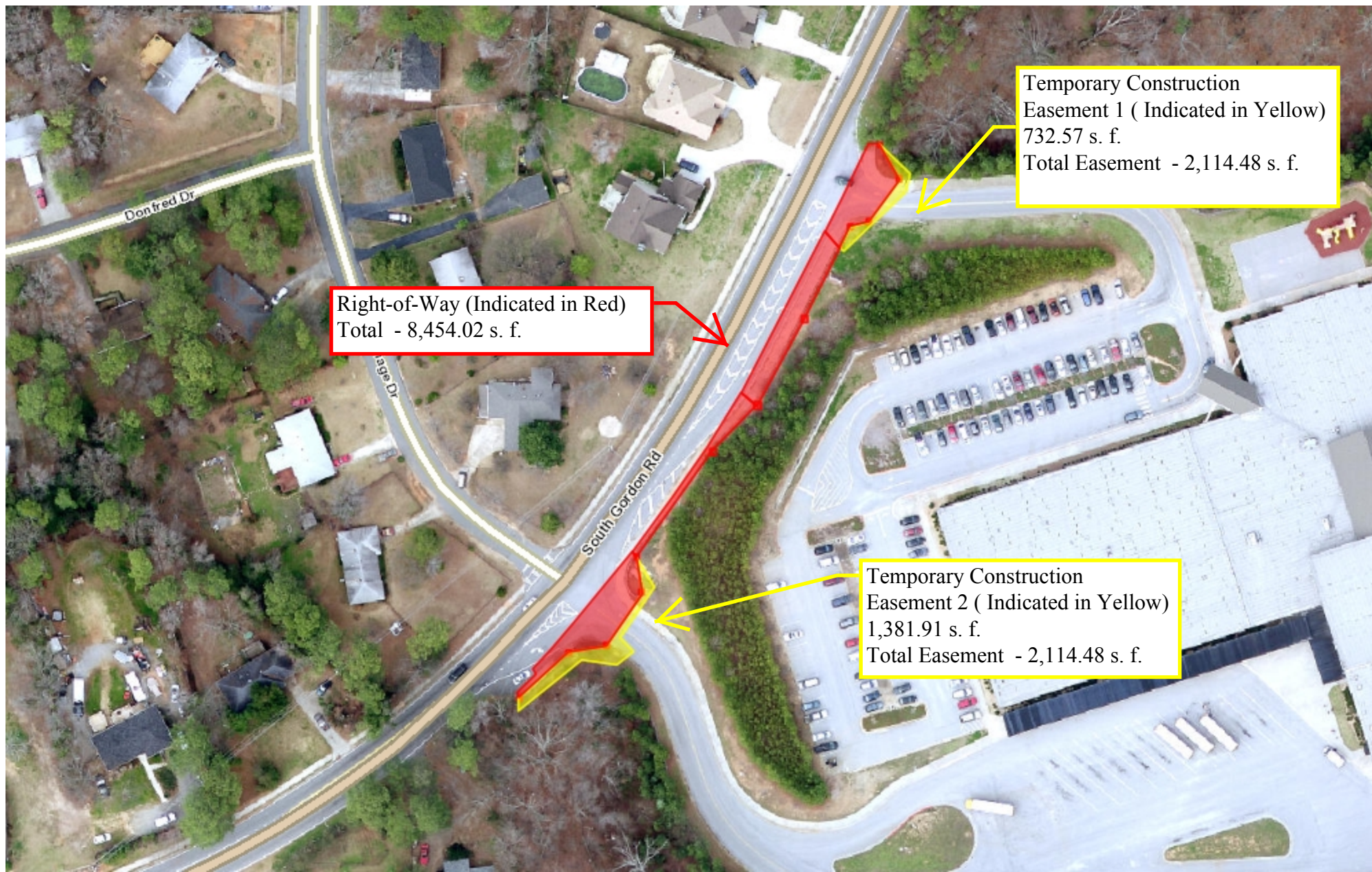




Riverside Intermediate School - Sidewalk Improvements



Right-of-Way (Indicated in Red)
Total - 8,454.02 s. f.

Temporary Construction
Easement 1 (Indicated in Yellow)
732.57 s. f.
Total Easement - 2,114.48 s. f.

Temporary Construction
Easement 2 (Indicated in Yellow)
1,381.91 s. f.
Total Easement - 2,114.48 s. f.

0.0 0 0.02 0.0 Miles

WGS_1984_Web_Mercator_Auxiliary_Sphere
© Cobb County Georgia

This map is a user generated static output from an Internet mapping site and is for reference only. Data layers that appear on this map may or may not be accurate, current, or otherwise reliable.

THIS MAP IS NOT TO BE USED FOR NAVIGATION

1:1,527



Map Notes: